

Product Information

Size:

50ul

Reactivity:

Human

Source:

Rabbit

Isotype:

IgG

Applications:

ELISA, WB

Recommended dilutions:

ELISA:1:2000-1:10000, WB:1:1000-1:5000

Protein Background:

Involved in cytoskeletal rearrangements required for phagocytosis of apoptotic cells and cell motility. Acts in association with DOCK1 and CRK. Was initially proposed to be required in complex with DOCK1 to activate Rac Rho small GTPases. May enhance the guanine nucleotide exchange factor (GEF) activity of DOCK1.

Gene ID:

ELMO1

Uniprot

Q92556

Synonyms:

Engulfment and cell motility protein 1 (Protein ced-12 homolog), ELMO1, KIAA0281

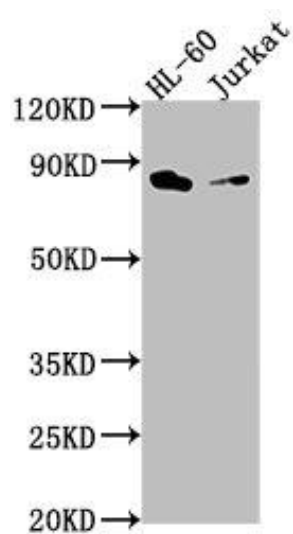
Immunogen:

Recombinant Human Engulfment and cell motility protein 1 protein (520-727AA).

Storage:

Preservative: 0.03% Proclin 300. Constituents: 50% Glycerol, 0.01M PBS, pH 7.4

Product Images



Western Blot. Positive WB detected in: HL-60 whole cell lysate, Jurkat whole cell lysate. All lanes: ELMO1 antibody at 1:2000. Secondary. Goat polyclonal to rabbit IgG at 1/50000 dilution. Predicted band size: 84, 29, 50 kDa. Observed band size: 84 kDa.