

### Product Information

**Size:**

50ul

**Reactivity:**

Human, Rat

**Source:**

Rabbit

**Isotype:**

IgG

**Applications:**

ELISA, WB

**Recommended dilutions:**

ELISA:1:2000-1:10000, WB:1:1000-1:5000

**Protein Background:**

Essential mediator of p53/TP53-dependent and p53/TP53-independent apoptosis. Functions by promoting partial unfolding of BCL2L1 and dissociation of BCL2L1 from p53/TP53. Regulates ER stress-induced neuronal apoptosis.

**Gene ID:**

BBC3

**Uniprot**

Q9BXH1

**Synonyms:**

Bcl-2-binding component 3 (JFY-1) (p53 up-regulated modulator of apoptosis), BBC3, PUMA

**Immunogen:**

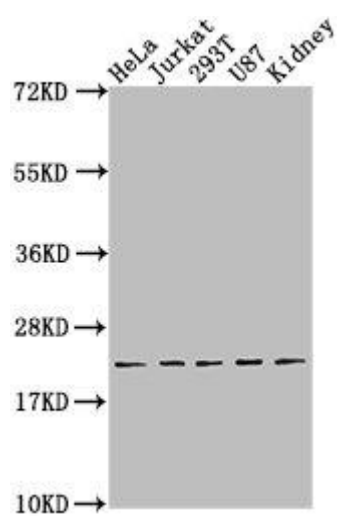
Peptide sequence from Human Bcl-2-binding component 3 protein (5-23AA).

**Storage:**

Preservative: 0.03% Proclin 300. Constituents: 50% Glycerol, 0.01M PBS, pH 7.4

## Product Images

---



Western Blot. Positive WB detected in: HeLa whole cell lysate, Jurkat whole cell lysate, 293T whole cell lysate, U87 whole cell lysate, Rat kidney tissue. All lanes: BBC3 antibody at 1:2000. Secondary. Goat polyclonal to rabbit IgG at 1/50000 dilution. Predicted band size: 21, 15 kDa. Observed band size: 21 kDa.