

CARD18 Antibody



PACO63271

Product Information

Size:

50ul

Reactivity:

Human

Source:

Rabbit

Isotype:

IgG

Applications:

ELISA, IHC

Recommended dilutions:

ELISA:1:2000-1:10000, IHC:1:20-1:200

Protein Background:

Inhibits generation of IL-1-beta by interacting with caspase-1 and preventing its association with RIP2. Down-regulates the release of IL1B.

Gene ID:

CARD18

Uniprot

P57730

Synonyms:

Caspase recruitment domain-containing protein 18 (Caspase-1 inhibitor Iceberg), CARD18, ICEBERG

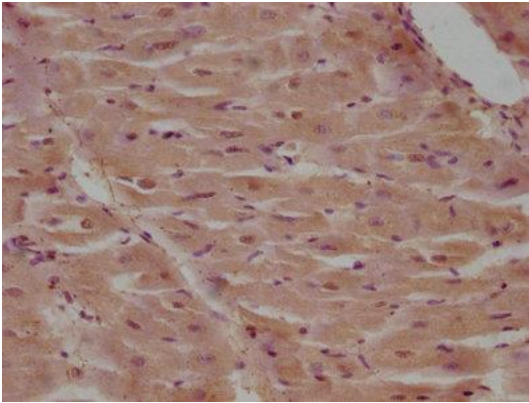
Immunogen:

Recombinant Human Caspase recruitment domain-containing protein 18 protein (1-90AA).

Storage:

Preservative: 0.03% Proclin 300. Constituents: 50% Glycerol, 0.01M PBS, pH 7.4

Product Images



IHC image of PACO63271 diluted at 1:100 and staining in paraffin-embedded human heart tissue performed on a Leica Bond™ system. After dewaxing and hydration, antigen retrieval was mediated by high pressure in a citrate buffer (pH 6.0). Section was blocked with 10% normal goat serum 30min at RT. Then primary antibody (1% BSA) was incubated at 4°C overnight. The primary is detected by a biotinylated secondary antibody and visualized using an HRP conjugated SP system.