

B4GALT6 Antibody



PACO63499

Product Information

Size:

50ul

Reactivity:

Human

Source:

Rabbit

Isotype:

IgG

Applications:

ELISA, WB

Recommended dilutions:

ELISA:1:2000-1:10000, WB:1:500-1:2000

Protein Background:

Required for the biosynthesis of glycosphingolipids.

Gene ID:

B4GALT6

Uniprot

Q9UBX8

Synonyms:

Beta-1,4-galactosyltransferase 6 (Beta-1,4-GalTase 6) (Beta4Gal-T6) (b4Gal-T6) (UDP-Gal: beta-GlcNAc beta-1,4-galactosyltransferase 6) (UDP-galactose: beta-N-acetylglucosamine beta-1,4-galactosyltransferase 6) [Includes: Glucosylceramide beta-1,4-galactosyltransferase (EC 2.4.1.274) (Lactosylceramide synthase) (LacCer synthase) (UDP-Gal: glucosylceramide beta-1,4-galactosyltransferase)], B4GALT6

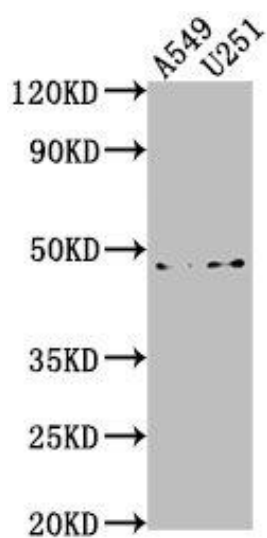
Immunogen:

Recombinant Human Beta-1,4-galactosyltransferase 6 protein (70-280AA).

Storage:

Preservative: 0.03% Proclin 300. Constituents: 50% Glycerol, 0.01M PBS, pH 7.4

Product Images



Western Blot. Positive WB detected in: A549 whole cell lysate, U251 whole cell lysate. All lanes: B4GALT6 antibody at 1:1000. Secondary. Goat polyclonal to rabbit IgG at 1/50000 dilution. Predicted band size: 45, 41 kDa. Observed band size: 45 kDa.