

Product Information

Size:

50ul

Reactivity:

Human, Mouse

Source:

Rabbit

Isotype:

IgG

Applications:

ELISA, WB

Recommended dilutions:

ELISA:1:2000-1:10000, WB:1:1000-1:5000

Protein Background:

Component of an E3 ubiquitin-protein ligase complex, in which it may act as a substrate recognition subunit. Involved in apoptosis by acting as a death receptor-associated protein that mediates apoptosis. Also involved in glucose homeostasis in pancreatic islet. Functions as an adapter/mediator in replication stress-induced signaling that leads to the activation of CHEK1.

Gene ID:

FEM1B

Uniprot

Q9UK73

Synonyms:

Protein fem-1 homolog B (FEM1b) (FEM1-beta) (Fem-1-like death receptor-binding protein alpha) (Fem-1-like in apoptotic pathway protein alpha) (F1A-alpha), FEM1B, F1AA KIAA0396

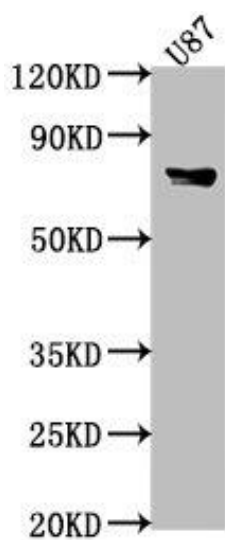
Immunogen:

Recombinant Human Protein fem-1 homolog B protein (400-627AA).

Storage:

Preservative: 0.03% Proclin 300. Constituents: 50% Glycerol, 0.01M PBS, pH 7.4

Product Images



Western Blot. Positive WB detected in: U87 whole cell lysate, Mouse heart tissue. All lanes: FEM1B antibody at 1:2000. Secondary. Goat polyclonal to rabbit IgG at 1/50000 dilution. Predicted band size: 71 kDa. Observed band size: 71 kDa.