

# Copper-metallothionein Antibody



PACO63591

---

## Product Information

**Size:**

50ul

**Reactivity:**

Roman snail

**Source:**

Rabbit

**Isotype:**

IgG

**Applications:**

ELISA, WB

**Recommended dilutions:**

ELISA:1:2000-1:10000, WB:1:2000-1:10000

**Protein Background:**

The metallothioneins are involved in the cellular sequestration of toxic metal ions and regulation of essential trace elements. This isoform binds exclusively copper.

**Gene ID:**

Copper-metallothionein

**Uniprot**

P55947

**Synonyms:**

Copper-metallothionein, Cu-MT

**Immunogen:**

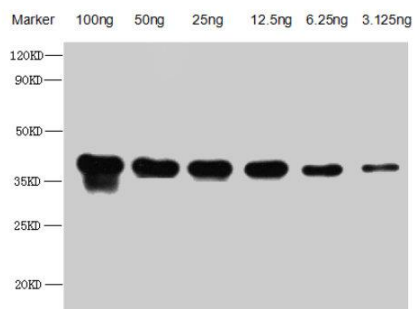
Recombinant Roman snail Copper-metallothionein protein (1-64AA).

**Storage:**

Preservative: 0.03% Proclin 300. Constituents: 50% Glycerol, 0.01M PBS, pH 7.4

## Product Images

---



Western Blot. Positive WB detected in Recombinant protein. All lanes: Copper-metallothionein antibody at 1:2500. Secondary. Goat polyclonal to rabbit IgG at 1/50000 dilution. Predicted band size: 32.7 kDa. Observed band size: 35 kDa.