

Product Information

Size:

50ul

Reactivity:

Human

Source:

Rabbit

Isotype:

IgG

Applications:

ELISA, IHC

Recommended dilutions:

ELISA:1:2000-1:10000, IHC:1:20-1:200

Protein Background:

Proton-coupled chloride transporter. Functions as antiport system and exchanges chloride ions against protons. Important for normal acid, fication of the endosome lumen. May play an important role in renal tubular function.

Gene ID:

CLCN5

Uniprot

P51795

Synonyms:

H(+)/Cl(-) exchange transporter 5 (Chloride channel protein 5) (ClC-5) (Chloride transporter ClC-5), CLCN5, CLCK2

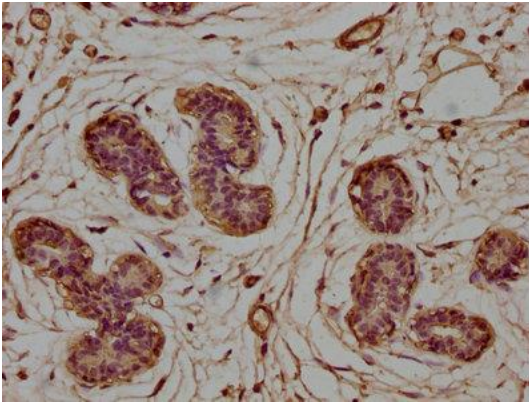
Immunogen:

Recombinant Human H(+)/Cl(-) exchange transporter 5 protein (553-746AA).

Storage:

Preservative: 0.03% Proclin 300. Constituents: 50% Glycerol, 0.01M PBS, pH 7.4

Product Images



IHC image of PACO63639 diluted at 1:100 and staining in paraffin-embedded human breast cancer performed on a Leica Bond™ system. After dewaxing and hydration, antigen retrieval was mediated by high pressure in a citrate buffer (pH 6.0). Section was blocked with 10% normal goat serum 30min at RT. Then primary antibody (1% BSA) was incubated at 4°C overnight. The primary is detected by a biotinylated secondary antibody and visualized using an HRP conjugated SP system.