

COL6A1 Antibody



PACO63643

Product Information

Size:

50ul

Reactivity:

Human

Source:

Rabbit

Isotype:

IgG

Applications:

ELISA, IF

Recommended dilutions:

ELISA:1:2000-1:10000, IF:1:50-1:200

Protein Background:

Collagen VI acts as a cell-binding protein.

Gene ID:

COL6A1

Uniprot

P12109

Synonyms:

Collagen alpha-1(VI) chain, COL6A1

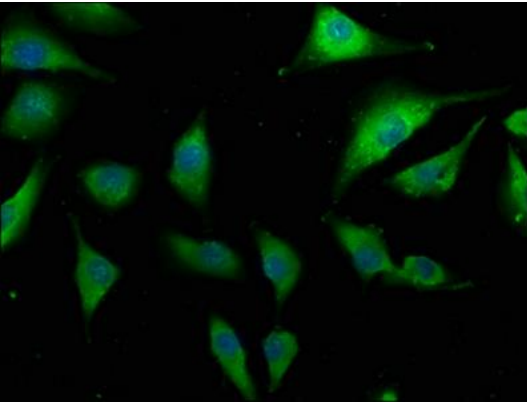
Immunogen:

Peptide sequence from Human Collagen alpha-1(VI) chain protein (64-80AA).

Storage:

Preservative: 0.03% Proclin 300. Constituents: 50% Glycerol, 0.01M PBS, pH 7.4

Product Images



Immunofluorescence staining of U251 cells with PACO63643 at 1:133, counter-stained with DAPI. The cells were fixed in 4% formaldehyde, permeabilized using 0.2% Triton X-100 and blocked in 10% normal Goat Serum. The cells were then incubated with the antibody overnight at 4°C. The secondary antibody was Alexa Fluor 488-conjugated AffiniPure Goat Anti-Rabbit IgG(H+L).