

LILRB5 Antibody



PACO63675

Product Information

Size:

50ul

Reactivity:

Human

Source:

Rabbit

Isotype:

IgG

Applications:

ELISA, IHC

Recommended dilutions:

ELISA:1:2000-1:10000, IHC:1:20-1:200

Protein Background:

May act as receptor for class I MHC antigens.

Gene ID:

LILRB5

Uniprot

O75023

Synonyms:

Leukocyte immunoglobulin-like receptor subfamily B member 5 (CD85 antigen-like family member C) (Leukocyte immunoglobulin-like receptor 8) (LIR-8) (CD antigen CD85c), LILRB5, LIR8

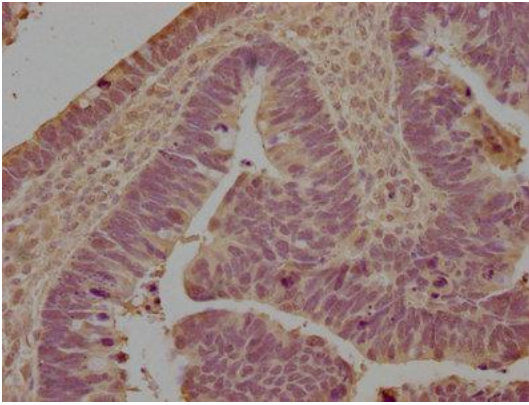
Immunogen:

Recombinant Human Leukocyte immunoglobulin-like receptor subfamily B member 5 protein (24-350AA).

Storage:

Preservative: 0.03% Proclin 300. Constituents: 50% Glycerol, 0.01M PBS, pH 7.4

Product Images



IHC image of PACO63675 diluted at 1:100 and staining in paraffin-embedded human ovarian cancer performed on a Leica Bond™ system. After dewaxing and hydration, antigen retrieval was mediated by high pressure in a citrate buffer (pH 6.0). Section was blocked with 10% normal goat serum 30min at RT. Then primary antibody (1% BSA) was incubated at 4°C overnight. The primary is detected by a biotinylated secondary antibody and visualized using an HRP conjugated SP system.