

PACO63791

Product Information

Size:

50ul

Reactivity:

Human

Source:

Rabbit

Isotype:

IgG

Applications:

ELISA, IHC

Recommended dilutions:

ELISA:1:2000-1:10000, IHC:1:20-1:200

Protein Background:

Binds to the C-terminal propeptide of type I procollagen and enhances procollagen C-proteinase activity.

Gene ID:

PCOLCE

Uniprot

Q15113

Synonyms:

Procollagen C-endopeptidase enhancer 1 (Procollagen COOH-terminal proteinase enhancer 1) (PCPE-1) (Procollagen C-proteinase enhancer 1) (Type 1 procollagen C-proteinase enhancer protein) (Type I procollagen COOH-terminal proteinase enhancer), PCOLCE, PCPE1

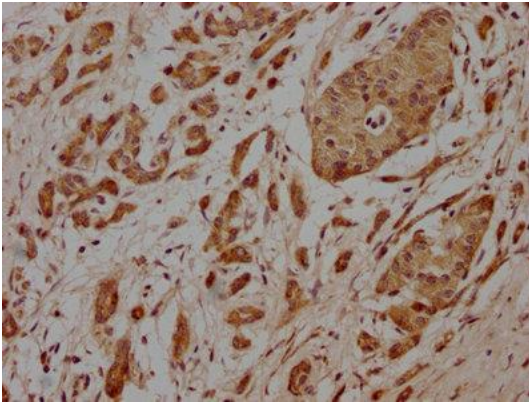
Immunogen:

Recombinant Human Procollagen C-endopeptidase enhancer 1 protein (169-449AA).

Storage:

Preservative: 0.03% Proclin 300. Constituents: 50% Glycerol, 0.01M PBS, pH 7.4

Product Images



IHC image of PACO63791 diluted at 1:100 and staining in paraffin-embedded human pancreatic cancer performed on a Leica Bond™ system. After dewaxing and hydration, antigen retrieval was mediated by high pressure in a citrate buffer (pH 6.0). Section was blocked with 10% normal goat serum 30min at RT. Then primary antibody (1% BSA) was incubated at 4°C overnight. The primary is detected by a biotinylated secondary antibody and visualized using an HRP conjugated SP system.