

# CAPN10 Antibody



PACO63879

---

## Product Information

**Size:**

50ul

**Reactivity:**

Human

**Source:**

Rabbit

**Isotype:**

IgG

**Applications:**

ELISA, IF

**Recommended dilutions:**

ELISA:1:2000-1:10000, IF:1:50-1:200

**Protein Background:**

Calcium-regulated non-lysosomal thiol-protease which catalyze limited proteolysis of substrates involved in cytoskeletal remodeling and signal transduction. May play a role in insulin-stimulated glucose uptake.

**Gene ID:**

CAPN10

**Uniprot**

Q9HC96

**Synonyms:**

Calpain-10 (EC 3.4.22) (Calcium-activated neutral proteinase 10) (CANP 10), CAPN10, KIAA1845

**Immunogen:**

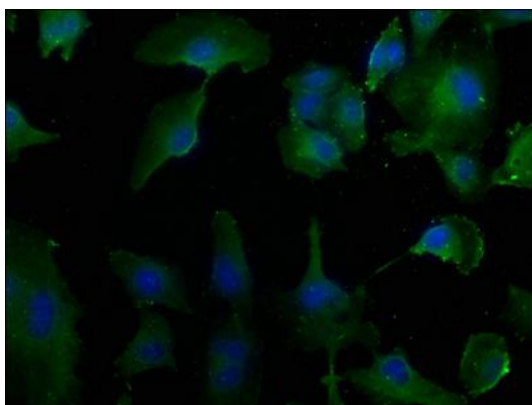
Recombinant Human Calpain-10 protein (1-287AA).

**Storage:**

Preservative: 0.03% Proclin 300. Constituents: 50% Glycerol, 0.01M PBS, pH 7.4

## Product Images

---



Immunofluorescence staining of U251 cells with PACO63879 at 1:50, counter-stained with DAPI. The cells were fixed in 4% formaldehyde, permeabilized using 0.2% Triton X-100 and blocked in 10% normal Goat Serum. The cells were then incubated with the antibody overnight at 4°C. The secondary antibody was Alexa Fluor 488-conjugated AffiniPure Goat Anti-Rabbit IgG(H+L).