

PACO63899

Product Information

Size:

50ul

Reactivity:

Human

Source:

Rabbit

Isotype:

IgG

Applications:

ELISA, WB

Recommended dilutions:

ELISA:1:2000-1:10000, WB:1:1000-1:5000

Protein Background:

Possible role in phototransduction.

Gene ID:

LRIT1

Uniprot

Q9P2V4

Synonyms:

Leucine-rich repeat, immunoglobulin-like domain and transmembrane domain-containing protein 1 (Leucine-rich repeat-containing protein 21) (Photoreceptor-associated LRR superfamily protein) (Retina-specific protein PAL), LRIT1, LRRC21 PAL

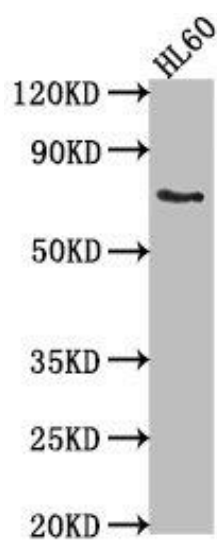
Immunogen:

Recombinant Human Leucine-rich repeat, immunoglobulin-like domain and transmembrane domain-containing protein 1 protein (251-456AA).

Storage:

Preservative: 0.03% Proclin 300. Constituents: 50% Glycerol, 0.01M PBS, pH 7.4

Product Images



Western Blot. Positive WB detected in: HL60 whole cell lysate. All lanes: LRIT1 antibody at 1:2000. Secondary. Goat polyclonal to rabbit IgG at 1/50000 dilution. Predicted band size: 69 kDa. Observed band size: 69 kDa.