

PACO63919

Product Information

Size:

50ul

Reactivity:

Human

Source:

Rabbit

Isotype:

IgG

Applications:

ELISA, IF

Recommended dilutions:

ELISA:1:2000-1:10000, IF:1:50-1:200

Protein Background:

Serine/threonine-protein kinase. Casein kinases are operationally defined by their preferential utilization of acid, c proteins such as caseins as substrates. It can phosphorylate a large number of proteins. Participates in Wnt signaling. Regulates fast synaptic transmission mediated by glutamate.

Gene ID:

CSNK1G3

Uniprot

Q9Y6M4

Synonyms:

Casein kinase I isoform gamma-3 (CKI-gamma 3) (EC 2.7.11.1), CSNK1G3

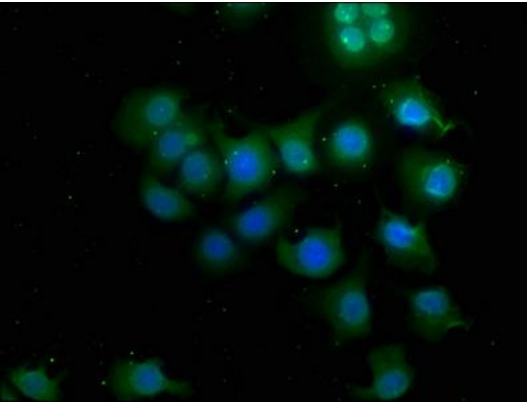
Immunogen:

Recombinant Human Casein kinase I isoform gamma-3 protein (1-204AA).

Storage:

Preservative: 0.03% Proclin 300. Constituents: 50% Glycerol, 0.01M PBS, pH 7.4

Product Images



Immunofluorescence staining of A549 cells with PACO63919 at 1:50, counter-stained with DAPI. The cells were fixed in 4% formaldehyde, permeabilized using 0.2% Triton X-100 and blocked in 10% normal Goat Serum. The cells were then incubated with the antibody overnight at 4°C. The secondary antibody was Alexa Fluor 488-conjugated AffiniPure Goat Anti-Rabbit IgG(H+L).