

PACO63935

---

## Product Information

**Size:**

50ul

**Reactivity:**

Rat

**Source:**

Rabbit

**Isotype:**

IgG

**Applications:**

ELISA, WB

**Recommended dilutions:**

ELISA:1:2000-1:10000, WB:1:1000-1:5000

**Protein Background:**

Serum albumin, the main protein of plasma, has a good binding capacity for water, Ca<sup>2+</sup>, Na<sup>+</sup>, K<sup>+</sup>, fatty acid, , hormones, bilirubin and drugs. Its main function is the regulation of the colloidal osmotic pressure of blood. Major zinc transporter in plasma, typically binds about 80% of all plasma zinc.

**Gene ID:**

Alb

**Uniprot**

P02770

**Synonyms:**

Serum albumin, Alb

**Immunogen:**

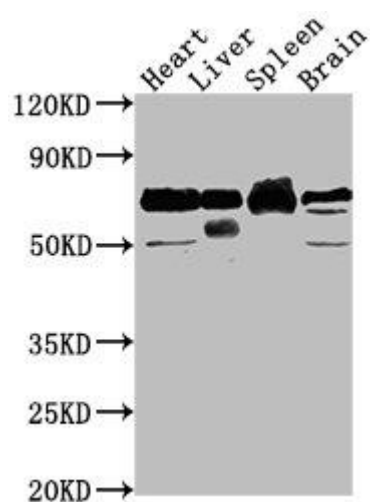
Recombinant Rat Serum albumin protein (403-608AA).

**Storage:**

Preservative: 0.03% Proclin 300. Constituents: 50% Glycerol, 0.01M PBS, pH 7.4

## Product Images

---



Western Blot. Positive WB detected in: Rat heart tissue, Rat liver tissue, Rat spleen tissue, Rat brain tissue. All lanes: Alb antibody at 1:2000. Secondary. Goat polyclonal to rabbit IgG at 1/50000 dilution. Predicted band size: 69 kDa. Observed band size: 69 kDa.