

Product Information

Size:

50ul

Reactivity:

Human

Source:

Rabbit

Isotype:

IgG

Applications:

ELISA, WB

Recommended dilutions:

ELISA:1:2000-1:10000, WB:1:1000-1:5000

Protein Background:

Hydrolyzes DNA under acid, c conditions. Does not require divalent cations for activity. Participates in the degradation of nuclear DNA during lens cell differentiation.

Gene ID:

DNASE2B

Uniprot

Q8WZ79

Synonyms:

Deoxyribonuclease-2-beta (EC 3.1.22.1) (DNase II-like acid, DNase) (DNase2-like acid, DNase) (Deoxyribonuclease II beta) (DNase II beta) (Endonuclease DLAD), DNASE2B, DLAD

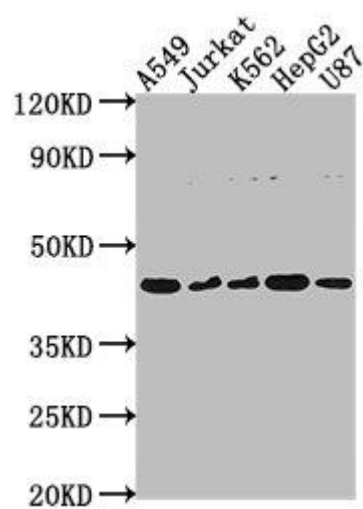
Immunogen:

Recombinant Human Deoxyribonuclease-2-β protein (68-281AA).

Storage:

Preservative: 0.03% Proclin 300. Constituents: 50% Glycerol, 0.01M PBS, pH 7.4

Product Images



Western Blot. Positive WB detected in: A549 whole cell lysate, Jurkat whole cell lysate, K562 whole cell lysate, HepG2 whole cell lysate, U87 whole cell lysate. All lanes: DNASE2B antibody at 1:2000. Secondary. Goat polyclonal to rabbit IgG at 1/50000 dilution. Predicted band size: 42, 18 kDa. Observed band size: 42 kDa.