

# Copper-metallothionein Antibody



PACO64003

---

## Product Information

**Size:**

50ul

**Reactivity:**

Roman snail

**Source:**

Copper-metallothionein

**Isotype:**

IgG

**Applications:**

ELISA, WB

**Recommended dilutions:**

ELISA:1:2000-1:10000, WB:1:1000-1:5000

**Protein Background:**

The metallothioneins are involved in the cellular sequestration of toxic metal ions and regulation of essential trace elements. This isoform binds exclusively copper.

**Gene ID:**

Copper-metallothionein

**Uniprot**

P55947

**Synonyms:**

Copper-metallothionein, Cu-MT

**Immunogen:**

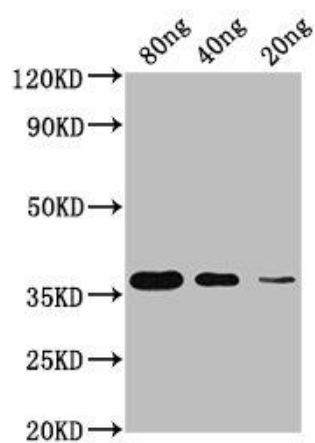
Recombinant Helix pomatia Copper-metallothionein protein (1-64aa).

**Storage:**

Preservative: 0.03% Proclin 300. Constituents: 50% Glycerol, 0.01M PBS, pH 7.4

## Product Images

---



Western Blot. Positive WB detected in Recombinant protein. All lanes: Copper-metallothionein antibody at 1:2000. Secondary. Goat polyclonal to rabbit IgG at 1/50000 dilution. Predicted band size: 35 KDa. Observed band size: 35 KDa.