

# Fgf2 Antibody



PACO64019

---

## Product Information

**Size:**

50ul

**Reactivity:**

Rat

**Source:**

Rabbit

**Isotype:**

IgG

**Applications:**

ELISA, WB

**Recommended dilutions:**

ELISA:1:2000-1:10000, WB:1:500-1:2000

**Protein Background:**

**Gene ID:**

Fgf2

**Uniprot**

P13109

**Synonyms:**

Fibroblast growth factor 2 (FGF-2) (Basic fibroblast growth factor) (bFGF) (Heparin-binding growth factor 2) (HBGF-2), Fgf2, Fgf-2

**Immunogen:**

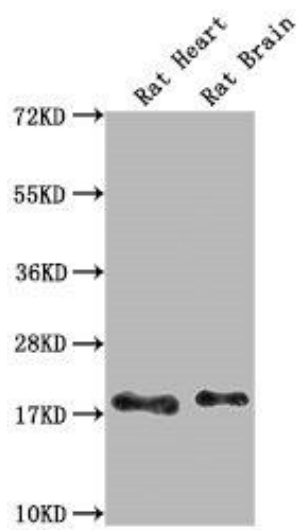
Recombinant Rat Fibroblast growth factor 2 protein (10-154AA).

**Storage:**

Preservative: 0.03% Proclin 300. Constituents: 50% Glycerol, 0.01M PBS, pH 7.4

## Product Images

---



Western Blot. Positive WB detected in: Rat Heart tissue, Rat Brain tissue. All lanes: Fgf2 antibody at 1:1000. Secondary. Goat polyclonal to rabbit IgG at 1/50000 dilution. Predicted band size: 18 kDa. Observed band size: 18 kDa.