

PACO64043

---

## Product Information

**Size:**

50ul

**Reactivity:**

Mouse

**Source:**

Rabbit

**Isotype:**

IgG

**Applications:**

ELISA, WB

**Recommended dilutions:**

ELISA:1:2000-1:10000, WB:1:1000-1:5000

**Protein Background:**

Pro-inflammatory cytokine. Involved in the innate immune response to bacterial pathogens. The expression of MIF at sites of inflammation suggests a role as mediator in regulating the function of macrophages in host defense. Counteracts the anti-inflammatory activity of glucocorticoids. Has phenylpyruvate tautomerase and dopachrome tautomerase activity (in vitro), but the physiological substrate is not known. It is not clear whether the tautomerase activity has any physiological relevance, and whether it is important for cytokine activity.

**Gene ID:**

Mif

**Uniprot**

P34884

**Synonyms:**

Macrophage migration inhibitory factor (MIF) (EC 5.3.2.1) (Delayed early response protein 6) (DER6) (Glycosylation-inhibiting factor) (GIF) (L-dopachrome isomerase) (L-dopachrome tautomerase) (EC 5.3.3.12) (Phenylpyruvate tautomerase), Mif

**Immunogen:**

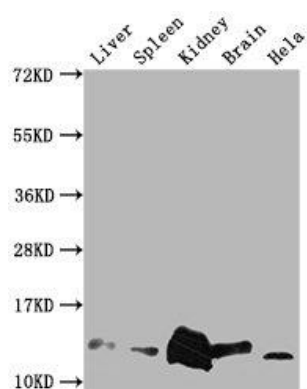
Recombinant Mouse Macrophage migration inhibitory factor protein (2-115AA).

**Storage:**

Preservative: 0.03% Proclin 300. Constituents: 50% Glycerol, 0.01M PBS, pH 7.4

## Product Images

---



Western Blot. Positive WB detected in: Mouse Liver tissue, Mouse Spleen tissue, Mouse kidney tissue, Mouse Brain tissue, HeLa whole cell lysate. All lanes: Mif antibody at 1:2000. Secondary. Goat polyclonal to rabbit IgG at 1/50000 dilution. Predicted band size: 13 kDa. Observed band size: 13 kDa.