

S100A12 Antibody



PACO64091

Product Information

Size:

50ul

Reactivity:

Human

Source:

Rabbit

Isotype:

IgG

Applications:

ELISA, IHC

Recommended dilutions:

ELISA:1:2000-1:10000, IHC:1:20-1:200

Protein Background:

Gene ID:

S100A12

Uniprot

P80511

Synonyms:

Protein S100-A12 (CGRP) (Calcium-binding protein in amniotic fluid 1) (CAAF1) (Calgranulin-C) (CAGC) (Extracellular newly identified RAGE-binding protein) (EN-RAGE) (Migration inhibitory factor-related protein 6) (MRP-6) (p6) (Neutrophil S100 protein) (S100 calcium-binding protein A12) [Cleaved into: Calcitermin], S100A12

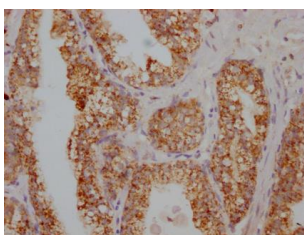
Immunogen:

Recombinant Human Protein S100-A12 protein (2-91AA).

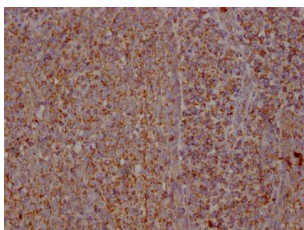
Storage:

Preservative: 0.03% Proclin 300. Constituents: 50% Glycerol, 0.01M PBS, pH 7.4

Product Images



IHC image of PACO64091 diluted at 1:100 and staining in paraffin-embedded human prostate cancer performed on a Leica Bond™ system. After dewaxing and hydration, antigen retrieval was mediated by high pressure in a citrate buffer (pH 6.0). Section was blocked with 10% normal goat serum 30min at RT. Then primary antibody (1% BSA) was incubated at 4°C overnight. The primary is detected by a Goat anti-rabbit IgG labeled by HRP and visualized using 0.05% DAB.



IHC image of PACO64091 diluted at 1:100 and staining in paraffin-embedded human tonsil tissue performed on a Leica Bond™ system. After dewaxing and hydration, antigen retrieval was mediated by high pressure in a citrate buffer (pH 6.0). Section was blocked with 10% normal goat serum 30min at RT. Then primary antibody (1% BSA) was incubated at 4°C overnight. The primary is detected by a Goat anti-rabbit IgG labeled by HRP and visualized using 0.05% DAB.