
Product Information

Size:

50ul

Reactivity:

Rat

Source:

Rabbit

Isotype:

IgG

Applications:

ELISA, WB

Recommended dilutions:

WB:1:1000-1:5000

Protein Background:

Carboxypeptidase which converts angiotensin I to angiotensin 1-9, a peptide of unknown function, and angiotensin II to angiotensin 1-7, a vasodilator. Also able to hydrolyze apelin-13 and dynorphin-13 with high efficiency. May be an important regulator of heart function. Plays an important role in amino acid, transport by acting as binding partner of amino acid, transporter SLC6A19 in intestine, regulating trafficking, expression on the cell surface, and its catalytic activity.

Gene ID:

Ace2

Uniprot

Q5EGZ1

Synonyms:

Angiotensin-converting enzyme 2 (EC 3.4.17.23) (ACE-related carboxypeptidase)
[Cleaved into: Processed angiotensin-converting enzyme 2], Ace2

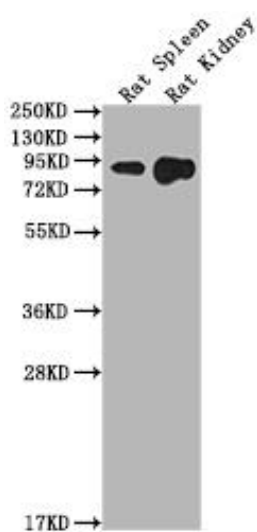
Immunogen:

Peptide sequence from Rat Ace2 protein (105-118AA).

Storage:

Preservative: 0.03% Proclin 300. Constituents: 50% Glycerol, 0.01M PBS, PH 7.4

Product Images



Western Blot. Positive WB detected in: Rat Spleen tissue, Rat Kidney tissue. All lanes: Ace2 antibody at 1:2000. Secondary. Goat polyclonal to rabbit IgG at 1/50000 dilution. Predicted band size: 93 kDa. Observed band size: 93 kDa.