

PACO64139

Product Information

Size:

50ul

Reactivity:

Rat

Source:

Rabbit

Isotype:

IgG

Applications:

ELISA, WB

Recommended dilutions:

WB:1:1000-1:5000

Protein Background:

Participates in the reverse transport of cholesterol from tissues to the liver for excretion by promoting cholesterol efflux from tissues and by acting as a cofactor for the lecithin cholesterol acyltransferase (LCAT). As part of the SPAP complex, activates spermatozoa motility.

Gene ID:

Apoa1

Uniprot

P04639

Synonyms:

Apolipoprotein A-I (Apo-AI) (ApoA-I) (Apolipoprotein A1) [Cleaved into: Proapolipoprotein A-I (ProapoA-I)], Apoa1

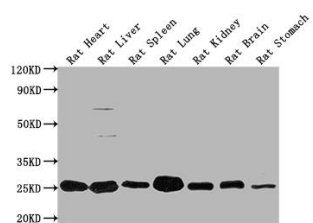
Immunogen:

Recombinant Rat Apoa1 protein (19-259AA).

Storage:

Preservative: 0.03% Proclin 300. Constituents: 50% Glycerol, 0.01M PBS, PH 7.4

Product Images



Western Blot. Positive WB detected in: Rat Heart tissue, Rat Liver tissue, Rat Spleen tissue, Rat Lung tissue, Rat Kidney tissue, Rat Brain tissue, Rat Stomach tissue. All lanes: ApoA1 antibody at 1:2000. Secondary. Goat polyclonal to rabbit IgG at 1/50000 dilution. Predicted band size: 31 kDa. Observed band size: 31 kDa.