

---

## Product Information

**Size:**

50ul

**Reactivity:**

Human

**Source:**

Rabbit

**Isotype:**

IgG

**Applications:**

ELISA, IHC

**Recommended dilutions:**

IHC:1:100-1:500

**Protein Background:**

May function as transcriptional repressor. May modulate the expression of genes required for the differentiation and/or maintenance of pancreatic and neuronal cell types. May be important for rod bipolar cell maturation.

**Gene ID:**

BHLHE23

**Uniprot**

Q8NDY6

**Synonyms:**

Class E basic helix-loop-helix protein 23 (bHLHe23) (Class B basic helix-loop-helix protein 4) (bHLHb4), BHLHE23, BHLHB4

**Immunogen:**

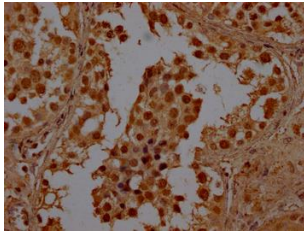
Recombinant Human Class E basic helix-loop-helix protein 23 protein (1-225AA).

**Storage:**

Preservative: 0.03% Proclin 300. Constituents: 50% Glycerol, 0.01M PBS, PH 7.4

## Product Images

---



IHC image of PACO64163 diluted at 1:100 and staining in paraffin-embedded human testis tissue performed on a Leica Bond™ system. After dewaxing and hydration, antigen retrieval was mediated by high pressure in a citrate buffer (pH 6.0). Section was blocked with 10% normal goat serum 30min at RT. Then primary antibody (1% BSA) was incubated at 4°C overnight. The primary is detected by a Goat anti-rabbit polymer IgG labeled by HRP and visualized using 0.05% DAB.