

## Product Information

**Size:**

50ul

**Reactivity:**

Human

**Source:**

Rabbit

**Isotype:**

IgG

**Applications:**

ELISA, IHC

**Recommended dilutions:**

IHC:1:100-1:500

**Protein Background:**

Histatins are salivary proteins that are considered to be major precursors of the protective proteinaceous structure on tooth surfaces (enamel pellicle). In addition, histatins exhibit antibacterial and antifungal activities. His3-(20-43)-peptide (histatin-5) is especially effective against *C. albicans* and *C. neoformans*, and inhibits Lys-gingipain and Arg-gingipain (rgpB) from *P. gingivalis*. In addition, His3-(20-43)-peptide is a potent inhibitor of metalloproteinases MMP2 and MMP9.

**Gene ID:**

HTN3

**Uniprot**

P15516

**Synonyms:**

Histatin-3 (Basic histidine-rich protein) (Hst) (Histidine-rich protein 3) (PB) [Cleaved into: Histatin-3, His3-(20-44)-peptide (His3 20/44) (His3-(1-25)-peptide) (His3 1/25) (Histatin-3 1/25) (Histatin-6), His3-(20-43)-peptide (His3 20/43) (His3-(1-24)-peptide) (His3 1/24) (Histatin-3 1/24) (Histatin-5), His3-(20-32)-peptide (His3 20/32) (His3-(1-13)-peptide) (His3 1/13) (Histatin-3 1/13)

**Immunogen:**

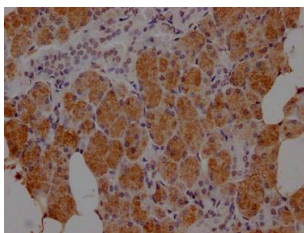
Peptide sequence from Human Histatin-3 protein (20-34AA).

**Storage:**

Preservative: 0.03% Proclin 300. Constituents: 50% Glycerol, 0.01M PBS, PH 7.4

## Product Images

---



IHC image of PACO64275 diluted at 1:100 and staining in paraffin-embedded human salivary gland tissue performed on a Leica Bond™ system. After dewaxing and hydration, antigen retrieval was mediated by high pressure in a citrate buffer (pH 6.0). Section was blocked with 10% normal goat serum 30min at RT. Then primary antibody (1% BSA) was incubated at 4°C overnight. The primary is detected by a Goat anti-rabbit IgG labeled by HRP and visualized using 0.05% DAB.