

PACO64471

Product Information

Size:

50ul

Reactivity:

Human

Source:

Rabbit

Isotype:

IgG

Applications:

ELISA, IF

Recommended dilutions:

IF:1:100-1:500

Protein Background:

Integral component of plasma membrane, nucleoplasm, lipid phosphatase activity, phosphatidate phosphatase activity, phospholipid dephosphorylation, phospholipid metabolic process, signal transduction.

Gene ID:

PLPPR1

Uniprot

Q8TBJ4

Synonyms:

Phospholipid phosphatase-related protein type 1 (Lipid phosphate phosphatase-related protein type 1) (Plasticity-related gene 3 protein) (PRG-3), PLPPR1, LPPR1 PRG3

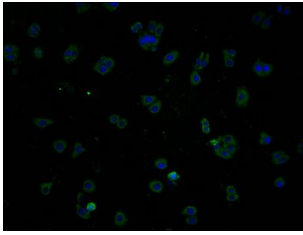
Immunogen:

Peptide sequence from Human Phospholipid phosphatase-related protein type 1 protein (51-66AA).

Storage:

Preservative: 0.03% Proclin 300. Constituents: 50% Glycerol, 0.01M PBS, PH 7.4

Product Images



Immunofluorescence staining of HepG2 cells with PACO64471 at 1:100, counter-stained with DAPI. The cells were fixed in 4% formaldehyde and blocked in 10% normal Goat Serum. The cells were then incubated with the antibody overnight at 4°C. The secondary antibody was Alexa Fluor 488-conjugated AffiniPure Goat Anti-Rabbit IgG(H+L).