

PACO64475

Product Information

Size:

50ul

Reactivity:

Human

Source:

Rabbit

Isotype:

IgG

Applications:

ELISA, IHC

Recommended dilutions:

IHC:1:200-1:500

Protein Background:

Integral component of plasma membrane, nucleoplasm, lipid phosphatase activity, phosphatidate phosphatase activity, phospholipid dephosphorylation, phospholipid metabolic process, signal transduction.

Gene ID:

PLPPR1

Uniprot

Q8TBJ4

Synonyms:

Phospholipid phosphatase-related protein type 1 (Lipid phosphate phosphatase-related protein type 1) (Plasticity-related gene 3 protein) (PRG-3), PLPPR1, LPPR1 PRG3

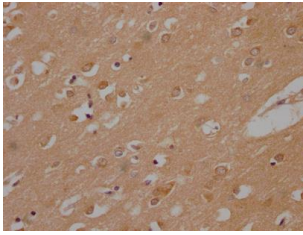
Immunogen:

Peptide sequence from Human Phospholipid phosphatase-related protein type 1 protein (51-66AA).

Storage:

Preservative: 0.03% Proclin 300. Constituents: 50% Glycerol, 0.01M PBS, PH 7.4

Product Images



IHC image of PACO64475 diluted at 1:200 and staining in paraffin-embedded human brain tissue performed on a Leica Bond™ system. After dewaxing and hydration, antigen retrieval was mediated by high pressure in a citrate buffer (pH 6.0). Section was blocked with 10% normal goat serum 30min at RT. Then primary antibody (1% BSA) was incubated at 4°C overnight. The primary is detected by a Goat anti-rabbit polymer IgG labeled by HRP and visualized using 0.05% DAB.