

# Ren1 Antibody



PACO64491

---

## Product Information

**Size:**

50ul

**Reactivity:**

Rat

**Source:**

Rabbit

**Isotype:**

IgG

**Applications:**

ELISA, WB, IHC

**Recommended dilutions:**

WB:1:1000-1:5000, IHC:1:100-1:500

**Protein Background:**

Renin is a highly specific endopeptidase, whose only known function is to generate angiotensin I from angiotensinogen in the plasma, initiating a cascade of reactions that produce an elevation of blood pressure and increased sodium retention by the kidney.

**Gene ID:**

Ren1

**Uniprot**

P08424

**Synonyms:**

Renin (EC 3.4.23.15) (Angiotensinogenase), Ren1, Ren

**Immunogen:**

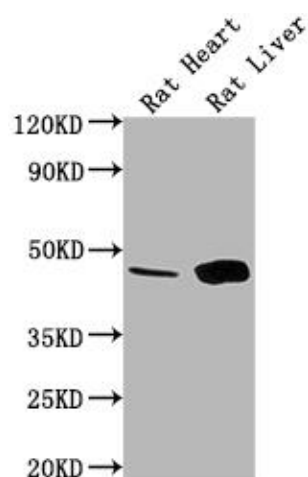
Recombinant Rat Ren1 protein (65-264AA).

**Storage:**

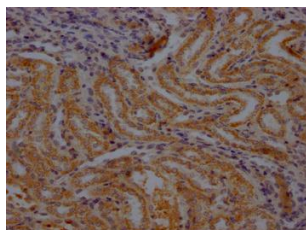
Preservative: 0.03% Proclin 300. Constituents: 50% Glycerol, 0.01M PBS, PH 7.4

## Product Images

---



Western Blot. Positive WB detected in: Rat Heart tissue, Rat Liver tissue. All lanes: Ren1 antibody at 1:1000. Secondary. Goat polyclonal to rabbit IgG at 1/50000 dilution. Predicted band size: 45 kDa. Observed band size: 45 kDa.



IHC image of PACO64491 diluted at 1:100 and staining in paraffin-embedded rat kidney tissue performed on a Leica Bond™ system. After dewaxing and hydration, antigen retrieval was mediated by high pressure in a citrate buffer (pH 6.0). Section was blocked with 10% normal goat serum 30min at RT. Then primary antibody (1% BSA) was incubated at 4°C overnight. The primary is detected by a Goat anti-rabbit polymer IgG labeled by HRP and visualized using 0.05% DAB.