

BCL2 Recombinant Antibody



RACO0046

Product Information

Size:

50ul

Reactivity:

Human, Mouse, Rat

Source:

Human

Isotype:

Rabbit IgG

Applications:

ELISA, WB, IHC, FC

Recommended dilutions:

WB:1:500-1:5000, IHC:1:50-1:500

Protein Background:

Suppresses apoptosis in a variety of cell systems including factor-dependent lymphohematopoietic and neural cells. Regulates cell death by controlling the mitochondrial membrane permeability. Appears to function in a feedback loop system with caspases. Inhibits caspase activity either by preventing the release of cytochrome c from the mitochondria and/or by binding to the apoptosis-activating factor (APAF-1). May attenuate inflammation by impairing NLRP1-inflammasome activation, hence CASP1 activation and IL1B release .

Gene ID:

BCL2

Uniprot

P10415

Synonyms:

Apoptosis regulator Bcl-2, BCL2

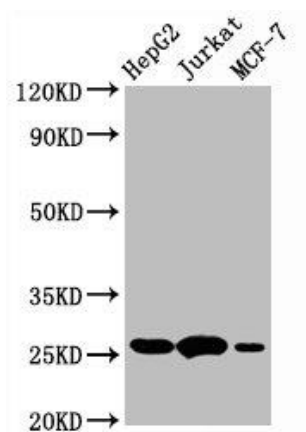
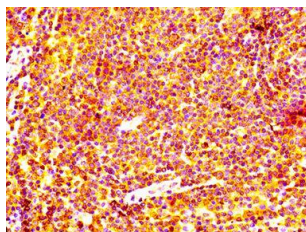
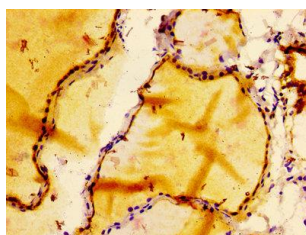
Immunogen:

A synthesized peptide.

Storage:

Rabbit IgG in phosphate buffered saline, pH 7.4, 150mM NaCl, 0.02% sodium azide and 50% glycerol.

Product Images



IHC image of RACO0046 diluted at 1:100 and staining in paraffin-embedded human thyroid tissue performed on a Leica Bond™ system. After dewaxing and hydration, antigen retrieval was mediated by high pressure in a citrate buffer (pH 6.0). Section was blocked with 10% normal goat serum 30min at RT. Then primary antibody (1% BSA) was incubated at 4°C overnight. The primary is detected by a biotinylated secondary antibody and visualized using an HRP conjugated SP system.

IHC image of RACO0046 diluted at 1:100 and staining in paraffin-embedded human lymph node tissue performed on a Leica Bond™ system. After dewaxing and hydration, antigen retrieval was mediated by high pressure in a citrate buffer (pH 6.0). Section was blocked with 10% normal goat serum 30min at RT. Then primary antibody (1% BSA) was incubated at 4°C overnight. The primary is detected by a biotinylated secondary antibody and visualized using an HRP conjugated SP system.

Western Blot

Positive WB detected in (HepG2 whole cell lysate) Jurkat whole cell lysate) MCF-7 whole cell lysate) All lanes: BCL2 antibody at (1µg/ml)

Secondary

Goat polyclonal to rabbit IgG at 1:50000 dilution

Predicted band size: 26 KDa

Observed band size: 26 KDa