

# ACTA1 Recombinant Antibody



RACO0047

---

## Product Information

**Size:**

50ul

**Reactivity:**

Human

**Source:**

Human

**Isotype:**

Rabbit IgG

**Applications:**

ELISA, WB, IHC, IF, FC

**Recommended dilutions:**

WB:1:500-1:5000, IHC:1:50-1:500, IF:1:30-1:200

**Protein Background:**

Actins are highly conserved proteins that are involved in various types of cell motility and are ubiquitously expressed in all eukaryotic cells.

**Gene ID:**

ACTA1

**Uniprot**

P68133

**Synonyms:**

Actin, alpha skeletal muscle, Alpha-actin-1, ACTA1, ACTA

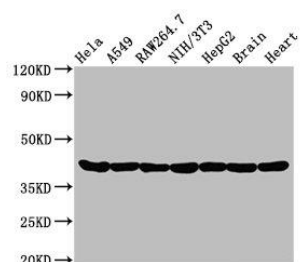
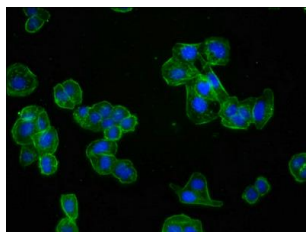
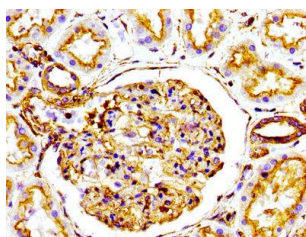
**Immunogen:**

A synthesized peptide.

**Storage:**

Rabbit IgG in phosphate buffered saline, pH 7.4, 150mM NaCl, 0.02% sodium azide and 50% glycerol.

## Product Images



IHC image of RACO0047 diluted at 1:100 and staining in paraffin-embedded human kidney tissue performed on a Leica Bond™ system. After dewaxing and hydration, antigen retrieval was mediated by high pressure in a citrate buffer (pH 6.0). Section was blocked with 10% normal goat serum 30min at RT. Then primary antibody (1% BSA) was incubated at 4°C overnight. The primary is detected by a biotinylated secondary antibody and visualized using an HRP conjugated SP system.

Immunofluorescence staining of HepG2 cells with RACO0047 at 1:60, counter-stained with DAPI. The cells were fixed in 4% formaldehyde, permeabilized using 0.2% Triton X-100 and blocked in 10% normal Goat Serum. The cells were then incubated with the antibody overnight at 4°C. The secondary antibody was Alexa Fluor 488-conjugated AffiniPure Goat Anti-Rabbit IgG (H+L).

### Western Blot

Positive WB detected in (Hela whole cell lysate) A549 whole cell lysate) Raw264.7 whole cell lysate) NIH/3T3 whole cell lysate) HepG2 whole cell lysate) Rat brain tissue, Rat heart tissue

All lanes: Actin antibody at 0.95µg/ml

Secondary

Goat polyclonal to rabbit IgG at 1:50000 dilution

Predicted band size: 42 KDa

Observed band size: 42 KDa