

Phospho-RPS6KA1 (T359+S363) Recombinant Antibody

RACO0049



Product Information

Size:

50ul

Reactivity:

Human

Source:

Human

Isotype:

Rabbit IgG

Applications:

ELISA, WB, IF, IP

Recommended dilutions:

WB:1:500-1:5000, IF:1:20-1:200, IP:1:200-1:1000

Protein Background:

Serine/threonine-protein kinase that acts downstream of ERK (MAPK1/ERK2 and MAPK3/ERK1) signaling and mediates mitogenic and stress-induced activation of the transcription factors CREB1, ETV1/ER81 and NR4A1/NUR77, regulates translation through RPS6 and EIF4B phosphorylation, and mediates cellular proliferation, survival, and differentiation by modulating mTOR signaling and repressing pro-apoptotic function of BAD and DAPK1. In fibroblast, is required for EGF-stimulated phosphorylation of CREB1, which results in the subsequent transcriptional activation of several immediate-early genes. In response to mitogenic stimulation (EGF and PMA), phosphorylates and activates NR4A1/NUR77 and ETV1/ER81 transcription factors and the cofactor CREBBP.

Gene ID:

RPS6KA1

Uniprot

Q15418

Synonyms:

Ribosomal protein S6 kinase alpha-1, S6K-alpha-1, 90 kDa ribosomal protein S6 kinase 1, p90-RSK 1, p90RSK1, p90S6K, MAP kinase-activated protein kinase 1a, MAPK-activated protein kinase 1a, MAPKAP kinase 1a, MAPKAPK-1a, Ribosomal S6 kinase 1, RSK-1, RPS6KA1, MAPKAPK1A, RSK1

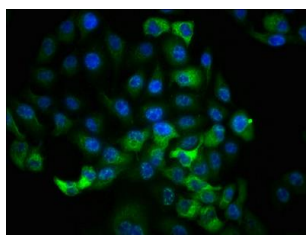
Immunogen:

A synthesized peptide derived from human Phospho-RPS6KA1 (T359+S363).

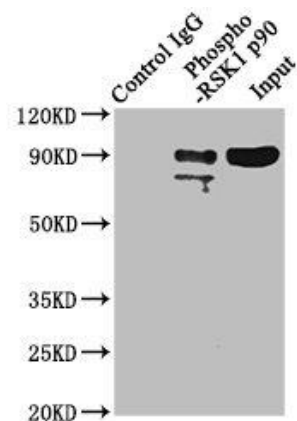
Storage:

Rabbit IgG in phosphate buffered saline, pH 7.4, 150mM NaCl, 0.02% sodium azide and 50% glycerol.

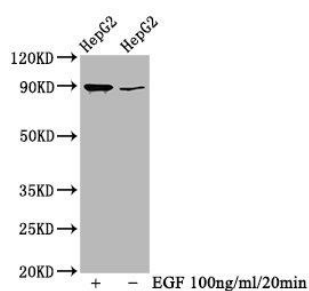
Product Images



Immunofluorescence staining of HeLa cells with RACO0049 at 1:100, counter-stained with DAPI. The cells were fixed in 4% formaldehyde, permeabilized using 0.2% Triton X-100 and blocked in 10% normal Goat Serum. The cells were then incubated with the antibody overnight at 4°C. The secondary antibody was Alexa Fluor 488-conjugated AffiniPure Goat Anti-Rabbit IgG (H+L).



Immunoprecipitating Phospho-RPS6KA1 in HeLa whole cell lysate) Lane 1: Rabbit control IgG(1µg) instead of RACO0049 in HeLa whole cell lysate) For western blotting, a HRP-conjugated Protein G antibody was used as the secondary antibody (1/2000)
Lane 2: RACO0049(3µg) + HeLa whole cell lysate (1mg)
Lane 3: HeLa whole cell lysate (20µg)



Western Blot
Positive WB detected in(HepG2 whole cell lysate) (treated with EGF or not)
All lanes: Phospho-RPS6KA1 antibody at 0.69µg/ml
Secondary
Goat polyclonal to rabbit IgG at 1:50000 dilution
Predicted band size: 90 KDa
Observed band size: 90 KDa