

Phospho-GYS1 (S641) Recombinant Antibody



RACO0054

Product Information

Size:

50ul

Reactivity:

Human

Source:

Human

Isotype:

Rabbit IgG

Applications:

ELISA, WB, IF

Recommended dilutions:

WB:1:500-1:5000, IF:1:20-1:200

Protein Background:

Transfers the glycosyl residue from UDP-Glc to the non-reducing end of alpha-1,4-glucan.

Gene ID:

GYS1

Uniprot

P13807

Synonyms:

Glycogen [starch] synthase, muscle, GYS1, GYS

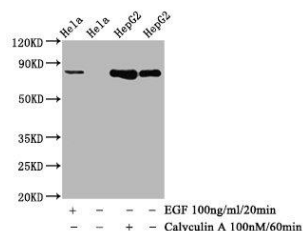
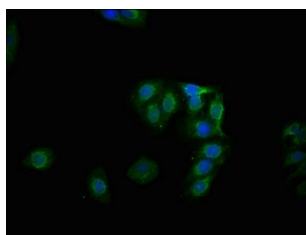
Immunogen:

A synthesized peptide derived from human Phospho-GYS1 (S641).

Storage:

Rabbit IgG in phosphate buffered saline , pH 7.4, 150mM NaCl, 0.02% sodium azide and 50% glycerol.

Product Images



Immunofluorescence staining of HepG2 cells with RACO0054 at 1:100, counter-stained with DAPI. The cells were fixed in 4% formaldehyde, permeabilized using 0.2% Triton X-100 and blocked in 10% normal Goat Serum. The cells were then incubated with the antibody overnight at 4°C. The secondary antibody was Alexa Fluor 488-conjugated AffiniPure Goat Anti-Rabbit IgG (H+L).

Western Blot

Positive WB detected in (HeLa whole cell lysate) HepG2 whole cell lysate) (treated with Calyculin A or EGF)

All lanes: Phospho-GYS1 antibody at 1. (2µg/ml)

Secondary

Goat polyclonal to rabbit IgG at 1:50000 dilution

Predicted band size: 85 KDa

Observed band size: 85 KDa