

Phospho-PPP2CA (Y307) Recombinant Antibody



RACO0062

Product Information

Size:

50ul

Reactivity:

Human

Source:

Human

Isotype:

Rabbit IgG

Applications:

ELISA, WB

Recommended dilutions:

WB:1:500-1:5000

Protein Background:

PP2A is the major phosphatase for microtubule-associated proteins (MAPs). PP2A can modulate the activity of phosphorylase B kinase casein kinase 2, mitogen-stimulated S6 kinase, and MAP-2 kinase. Cooperates with SGO2 to protect centromeric cohesin from separase-mediated cleavage in oocytes specifically during meiosis I (By similarity). Can dephosphorylate SV40 large T antigen and p53/TP53. Activates RAF1 by dephosphorylating it at 'Ser-259'.

Gene ID:

PPP2CA

Uniprot

P67775

Synonyms:

Serine/threonine-protein phosphatase 2A catalytic subunit alpha isoform, PP2A-alpha, Replication protein C, RP-C, PPP2CA

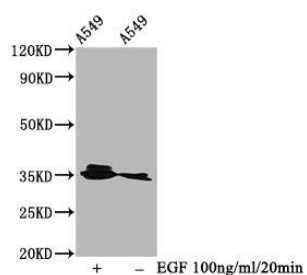
Immunogen:

A synthesized peptide derived from human Phospho-PPP2CA (Y307).

Storage:

Rabbit IgG in phosphate buffered saline , pH 7.4, 150mM NaCl, 0.02% sodium azide and 50% glycerol.

Product Images



Western Blot

Positive WB detected in(A549 whole cell lysate) (treated with EGF or not)

All lanes: Phospho-PPP2CA antibody at 0.95 μ g/ml

Secondary

Goat polyclonal to rabbit IgG at 1:50000 dilution

Predicted band size: 35 KDa

Observed band size: 35 KDa