

Phospho-EGFR (Y1092) Recombinant Antibody



RACO0063

Product Information

Size:

50ul

Reactivity:

Human

Source:

Human

Isotype:

Rabbit IgG

Applications:

ELISA, WB

Recommended dilutions:

WB:1:500-1:5000

Protein Background:

Receptor tyrosine kinase binding ligands of the EGF family and activating several signaling cascades to convert extracellular cues into appropriate cellular responses. Known ligands include EGF, TGFA/TGF-alpha, amphiregulin, epigen/EPGN, BTC/betacellulin, epiregulin/EREG and HBEGF/heparin-binding EGF. Ligand binding triggers receptor homo- and/or heterodimerization and autophosphorylation on key cytoplasmic residues. The phosphorylated receptor recruits adapter proteins like GRB2 which in turn activates complex downstream signaling cascades. Activates at least 4 major downstream signaling cascades including the RAS-RAF-MEK-ERK, PI3 kinase-AKT, PLCgamma-PKC and STATs modules.

Gene ID:

EGFR

Uniprot

P00533

Synonyms:

Epidermal growth factor receptor, Proto-oncogene c-ErbB-1, Receptor tyrosine-protein kinase erbB-1, EGFR, ERBB, ERBB1, HER1

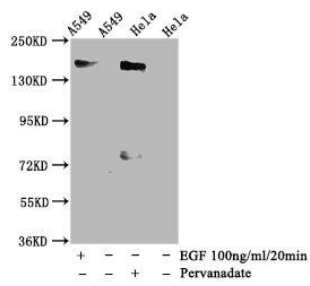
Immunogen:

A synthesized peptide derived from human Phospho-EGFR (Y1092).

Storage:

Rabbit IgG in phosphate buffered saline , pH 7.4, 150mM NaCl, 0.02% sodium azide and 50% glycerol.

Product Images



Western Blot

Positive WB detected in(A549 whole cell lysate) HeLa whole cell lysate) (treated with Pervanadate)or EGF)

All lanes: Phospho-EGFR antibody at 1.35 μ g/ml

Secondary

Goat polyclonal to rabbit IgG at 1:50000 dilution

Predicted band size: 170 KDa

Observed band size: 170 KDa