

Phospho-RPS6KA1 (S380) Recombinant Antibody



RACO0071

Product Information

Size:

50ul

Reactivity:

Human

Source:

Human

Isotype:

Rabbit IgG

Applications:

ELISA, WB, IP

Recommended dilutions:

WB:1:500-1:5000, IP:1:200-1:1000

Protein Background:

Serine/threonine-protein kinase that acts downstream of ERK (MAPK1/ERK2 and MAPK3/ERK1) signaling and mediates mitogenic and stress-induced activation of the transcription factors CREB1, ETV1/ER81 and NR4A1/NUR77, regulates translation through RPS6 and EIF4B phosphorylation, and mediates cellular proliferation, survival, and differentiation by modulating mTOR signaling and repressing pro-apoptotic function of BAD and DAPK1. In fibroblast, is required for EGF-stimulated phosphorylation of CREB1, which results in the subsequent transcriptional activation of several immediate-early genes. In response to mitogenic stimulation (EGF and PMA), phosphorylates and activates NR4A1/NUR77 and ETV1/ER81 transcription factors and the cofactor CREBBP. Upon insulin-derived signal, acts indirectly on the transcription regulation of several genes by phosphorylating GSK3B at 'Ser-9' and inhibiting its activity.

Gene ID:

RPS6KA1

Uniprot

Q15418

Synonyms:

Ribosomal protein S6 kinase alpha-1, S6K-alpha-1, 90 kDa ribosomal protein S6 kinase 1, p90-RSK 1, p90RSK1, p90S6K, MAP kinase-activated protein kinase 1a, MAPK-activated protein kinase 1a, MAPKAP kinase 1a, MAPKAPK-1a, Ribosomal S6 kinase 1, RSK-1, RPS6KA1, MAPKAPK1A, RSK1

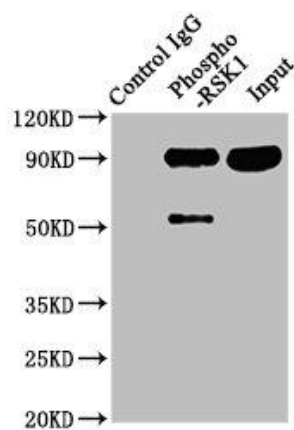
Immunogen:

A synthesized peptide derived from human Phospho-RPS6KA1 (S380).

Storage:

Rabbit IgG in phosphate buffered saline , pH 7.4, 150mM NaCl, 0.02% sodium azide and 50% glycerol.

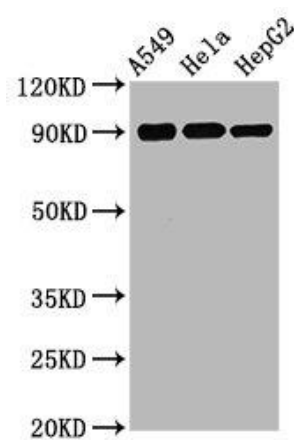
Product Images



Immunoprecipitating Phospho-RPS6KA1 in Hela whole cell lysate) Lane 1: Rabbit control IgG(1μg)instead of RACO0071 in Hela whole cell lysate) For western blotting, a HRP-conjugated Protein G antibody was used as the secondary antibody (1/2000)

Lane 2: RACO0071(3μg)+ Hela whole cell lysate (1mg)

Lane 3: Hela whole cell lysate) (20μg)



Western Blot

Positive WB detected in(A549 whole cell lysate) Hela whole cell lysate) HepG2 whole cell lysate) All lanes: Phospho-RPS6KA1 antibody at 1.75μg/ml

Secondary

Goat polyclonal to rabbit IgG at 1:50000 dilution

Predicted band size: 90 KDa

Observed band size: 90 KDa