

# Phospho-ATF2 (T71) Recombinant Antibody



RACO0077

---

## Product Information

**Size:**

50ul

**Reactivity:**

Human

**Source:**

Human

**Isotype:**

Rabbit IgG

**Applications:**

ELISA, WB, IF

**Recommended dilutions:**

WB:1:500-1:5000, IF:1:20-1:200

**Protein Background:**

Transcriptional activator which regulates the transcription of various genes, including those involved in anti-apoptosis, cell growth, and DNA damage response. Dependent on its binding partner, binds to CRE (cAMP response element) consensus sequences (5'-TGACGTCA-3') or to AP-1 (activator protein 1) consensus sequences (5'-TGACTCA-3'). In the nucleus, contributes to global transcription and the DNA damage response, in addition to specific transcriptional activities that are related to cell development, proliferation and death. In the cytoplasm, interacts with and perturbs HK1- and VDAC1-containing complexes at the mitochondrial outer membrane, thereby impairing mitochondrial membrane potential, inducing mitochondrial leakage and promoting cell death. T.

**Gene ID:**

ATF2

**Uniprot**

P15336

**Synonyms:**

Cyclic AMP-dependent transcription factor ATF-2, Activating transcription factor 2, Cyclic AMP-responsive element-binding protein 2, CREB-2, cAMP-responsive element-binding protein 2, HB16, Histone acetyltransferase ATF2, cAMP response element-binding protein CRE-BP1, ATF2, CREB2, CREBP1

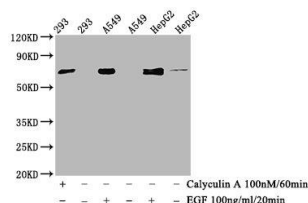
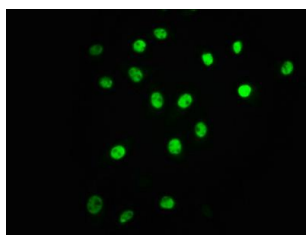
**Immunogen:**

A synthesized peptide derived from human Phospho-ATF2 (T71).

**Storage:**

Rabbit IgG in phosphate buffered saline , pH 7.4, 150mM NaCl, 0.02% sodium azide and 50% glycerol.

## Product Images



Immunofluorescence staining of A549 cells (treated with 100mM EGF for 20min) with RACO0077 at 1:63, counter-stained with DAPI. The cells were fixed in 4% formaldehyde, permeabilized using 0.2% Triton X-100 and blocked in 10% normal Goat Serum. The cells were then incubated with the antibody overnight at 4°C. The secondary antibody was Alexa Fluor 488-conjugated AffiniPure Goat Anti-Rabbit IgG (H+L).

### Western Blot

Positive WB detected in(293 whole cell lysate) A549 whole cell lysate) HepG2 whole cell lysate) (treated with Calyculin A or EGF)

All lanes: Phospho-ATF2 antibody at 1.015µg/ml

Secondary

Goat polyclonal to rabbit IgG at 1:50000 dilution

Predicted band size: 70 KDa

Observed band size: 70 KDa