

# Phospho-SMC1A (S957) Recombinant Antibody



RACO0083

---

## Product Information

**Size:**

50ul

**Reactivity:**

Human

**Source:**

Human

**Isotype:**

Rabbit IgG

**Applications:**

ELISA, WB

**Recommended dilutions:**

WB:1:500-1:5000

**Protein Background:**

Involved in chromosome cohesion during cell cycle and in DNA repair. Central component of cohesin complex. The cohesin complex is required for the cohesion of sister chromatids after DNA replication. The cohesin complex apparently forms a large proteinaceous ring within which sister chromatids can be trapped. At anaphase, the complex is cleaved and dissociates from chromatin, allowing sister chromatids to segregate. The cohesin complex may also play a role in spindle pole assembly during mitosis. Involved in DNA repair via its interaction with BRCA1 and its related phosphorylation by ATM, or via its phosphorylation by ATR. Works as a downstream effector both in the ATM/NBS1 branch and in the ATR/MSH2 branch of S-phase checkpoint.

**Gene ID:**

SMC1A

**Uniprot**

Q14683

**Synonyms:**

Structural maintenance of chromosomes protein 1A, SMC protein 1A, SMC-1-alpha, Sb1.8, SMC1A, DXS423E, KIAA0178, SB1.8, SMC1, SMC1L1

**Immunogen:**

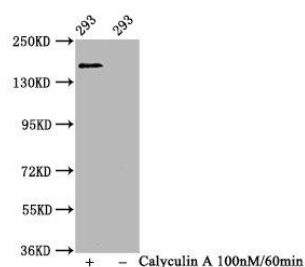
A synthesized peptide derived from human Phospho-SMC1A (S957).

**Storage:**

Rabbit IgG in phosphate buffered saline , pH 7.4, 150mM NaCl, 0.02% sodium azide and 50% glycerol.

## Product Images

---



### Western Blot

Positive WB detected in(293 whole cell lysate) (treated with Calyculin A or not)

All lanes: Phospho-SMC1A antibody at 1. (1 $\mu$ g/ml)

Secondary

Goat polyclonal to rabbit IgG at 1:50000 dilution

Predicted band size: 160 KDa

Observed band size: 160 KDa