

# Phospho-HSPB1 (S82) Recombinant Antibody



RACO0085

---

## Product Information

**Size:**

50ul

**Reactivity:**

Human

**Source:**

Human

**Isotype:**

Rabbit IgG

**Applications:**

ELISA, WB, IHC

**Recommended dilutions:**

WB:1:500-1:5000, IHC:1:50-1:200

**Protein Background:**

Small heat shock protein which functions as a molecular chaperone probably maintaining denatured proteins in a folding-competent state . Plays a role in stress resistance and actin organization . Through its molecular chaperone activity may regulate numerous biological processes including the phosphorylation and the axonal transport of neurofilament proteins .

**Gene ID:**

HSPB1

**Uniprot**

P04792

**Synonyms:**

Heat shock protein beta-1, HspB1, 28 kDa heat shock protein, Estrogen-regulated 24 kDa protein, Heat shock 27 kDa protein, HSP 27, Stress-responsive protein 27, SRP27, HSPB1, HSP27, HSP28

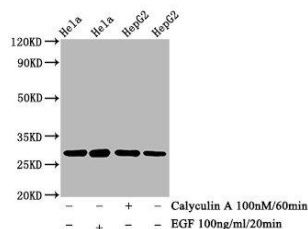
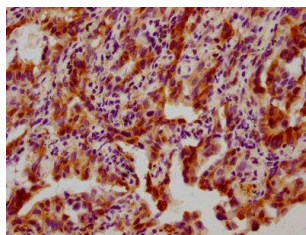
**Immunogen:**

A synthesized peptide derived from human Phospho-HSPB1 (S82).

**Storage:**

Rabbit IgG in phosphate buffered saline , pH 7.4, 150mM NaCl, 0.02% sodium azide and 50% glycerol.

## Product Images



IHC image of RACO0085 diluted at 1:100 and staining in paraffin-embedded human lung cancer performed on a Leica Bond<sup>TM</sup> system. After dewaxing and hydration, antigen retrieval was mediated by high pressure in a citrate buffer (pH 6.0). Section was blocked with 10% normal goat serum 30min at RT. Then primary antibody (1% BSA) was incubated at 4°C overnight. The primary is detected by a biotinylated secondary antibody and visualized using an HRP conjugated SP system.

### Western Blot

Positive WB detected in (Hela whole cell lysate) HepG2 whole cell lysate) (treated with Calyculin A or EGF)

All lanes: Phospho-HSPB1 antibody at 0. (3µg/ml)

Secondary

Goat polyclonal to rabbit IgG at 1:50000 dilution

Predicted band size: 27 KDa

Observed band size: 27 KDa