

# Phospho-SMAD2 (S255) Recombinant Antibody



RACO0100

---

## Product Information

**Size:**

50ul

**Reactivity:**

Human

**Source:**

Human

**Isotype:**

Rabbit IgG

**Applications:**

ELISA, IF

**Recommended dilutions:**

IF:1:20-1:200

**Protein Background:**

Receptor-regulated SMAD (R-SMAD) that is an intracellular signal transducer and transcriptional modulator activated by TGF-beta (transforming growth factor) and activin type 1 receptor kinases. Binds the TRE element in the promoter region of many genes that are regulated by TGF-beta and, on formation of the SMAD2/SMAD4 complex, activates transcription. May act as a tumor suppressor in colorectal carcinoma. Positively regulates PDPK1 kinase activity by stimulating its dissociation from the 14-3-3 protein YWHAQ which acts as a negative regulator.

**Gene ID:**

SMAD2

**Uniprot**

Q15796

**Synonyms:**

Mothers against decapentaplegic homolog 2, MAD homolog 2, Mothers against DPP homolog 2, JV18-1, Mad-related protein 2, hMAD-2, SMAD family member 2, SMAD 2, Smad2, hSMAD2, SMAD2, MADH2, MADR2

**Immunogen:**

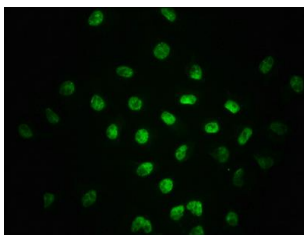
A synthesized peptide derived from human Phospho-SMAD2 (S255).

**Storage:**

Rabbit IgG in phosphate buffered saline , pH 7.4, 150mM NaCl, 0.02% sodium azide and 50% glycerol.

## Product Images

---



Immunofluorescence staining of A549 cells with RACO0100 at 1:100, counter-stained with DAPI. The cells were fixed in 4% formaldehyde, permeabilized using 0.2% Triton X-100 and blocked in 10% normal Goat Serum. The cells were then incubated with the antibody overnight at 4°C. The secondary antibody was Alexa Fluor 488-conjugated AffiniPure Goat Anti-Rabbit IgG (H+L).