

Phospho-BRAF (T401) Recombinant Antibody



RACO0105

Product Information

Size:

50ul

Reactivity:

Human

Source:

Human

Isotype:

Rabbit IgG

Applications:

ELISA, WB, IF

Recommended dilutions:

WB:1:500-1:5000, IF:1:20-1:200

Protein Background:

Protein kinase involved in the transduction of mitogenic signals from the cell membrane to the nucleus. May play a role in the postsynaptic responses of hippocampal neuron. Phosphorylates MAP2K1, and thereby contributes to the MAP kinase signal transduction pathway.

Gene ID:

BRAF

Uniprot

P15056

Synonyms:

Serine/threonine-protein kinase B-raf, Proto-oncogene B-Raf, p94, v-Raf murine sarcoma viral oncogene homolog B1, BRAF, BRAF1, RAFB1

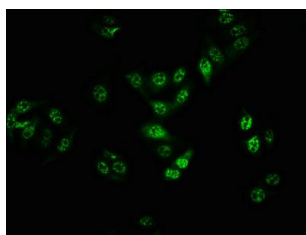
Immunogen:

A synthesized peptide derived from human Phospho-BRAF (T401).

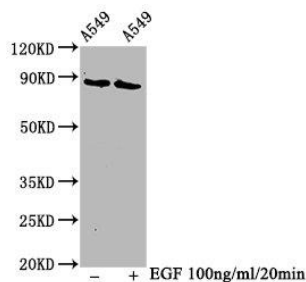
Storage:

Rabbit IgG in phosphate buffered saline , pH 7.4, 150mM NaCl, 0.02% sodium azide and 50% glycerol.

Product Images



Immunofluorescence staining of HepG2 cells with RACO0105 at 1:100, counter-stained with DAPI. The cells were fixed in 4% formaldehyde, permeabilized using 0.2% Triton X-100 and blocked in 10% normal Goat Serum. The cells were then incubated with the antibody overnight at 4°C. The secondary antibody was Alexa Fluor 488-conjugated AffiniPure Goat Anti-Rabbit IgG (H+L).



Western Blot

Positive WB detected in(A549 whole cell lysate) (treated with EGF or not)

All lanes: Phospho-BRAF antibody at 1(3μg/ml)

Secondary

Goat polyclonal to rabbit IgG at 1:50000 dilution

Predicted band size: 85 KDa

Observed band size: 85 KDa