

Phospho-CTNNB1 (S33/S37) Recombinant Antibody

RACO0109



Product Information

Size:

50ul

Reactivity:

Human

Source:

Human

Isotype:

Rabbit IgG

Applications:

ELISA, IF

Recommended dilutions:

IF:1:20-1:200

Protein Background:

Key downstream component of the canonical Wnt signaling pathway. In the absence of Wnt, forms a complex with AXIN1, AXIN2, APC, CSNK1A1 and GSK3B that promotes phosphorylation on N-terminal Ser and Thr residues and ubiquitination of CTNNB1 via BTRC and its subsequent degradation by the proteasome. In the presence of Wnt ligand, CTNNB1 is not ubiquitinated and accumulates in the nucleus, where it acts as a coactivator for transcription factors of the TCF/LEF family, leading to activate Wnt responsive genes. Involved in the regulation of cell adhesion, as component of an E-cadherin: catenin adhesion complex. Acts as a negative regulator of centrosome cohesion. Involved in the CDK2/PTPN6/CTNNB1/CEACAM1 pathway of insulin internalization. Blocks anoikis of malignant kidney and intestinal epithelial cells and promotes their anchorage-independent growth by down-regulating DAPK2.

Gene ID:

CTNNB1

Uniprot

P35222

Synonyms:

Catenin beta-1, Beta-catenin, CTNNB1, CTNNB, OK/SW-cl.35, PRO2286

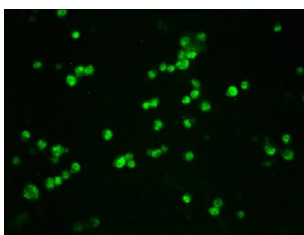
Immunogen:

A synthesized peptide derived from human Phospho-CTNNB1 (S33/S37).

Storage:

Rabbit IgG in phosphate buffered saline , pH 7.4, 150mM NaCl, 0.02% sodium azide and 50% glycerol.

Product Images



Immunofluorescence staining of 293T cells (treated with 50nM Calyculin A for 30min) with RACO0109 at 1:100, counter-stained with DAPI. The cells were fixed in 4% formaldehyde, permeabilized using 0.2% Triton X-100 and blocked in 10% normal Goat Serum. The cells were then incubated with the antibody overnight at 4°C. The secondary antibody was Alexa Fluor 488-conjugated AffiniPure Goat Anti-Rabbit IgG (H+L).