

# Phospho-MLKL (S358) Recombinant Antibody



RACO0124

---

## Product Information

**Size:**

50ul

**Reactivity:**

Human

**Source:**

Human

**Isotype:**

Rabbit IgG

**Applications:**

ELISA, IHC

**Recommended dilutions:**

IHC:1:50-1:200

**Protein Background:**

Pseudokinase that plays a key role in TNF-induced necroptosis, a programmed cell death process. Activated following phosphorylation by RIPK3, leading to homotrimerization, localization to the plasma membrane and execution of programmed necrosis characterized by calcium influx and plasma membrane damage. Does not have protein kinase activity.

**Gene ID:**

MLKL

**Uniprot**

Q8NB16

**Synonyms:**

Mixed lineage kinase domain-like protein, hMLKL, MLKL

**Immunogen:**

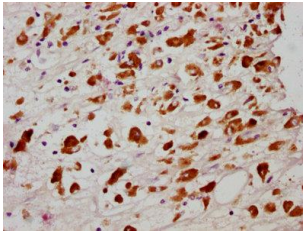
A synthesized peptide derived from human Phospho-MLKL (S358).

**Storage:**

Rabbit IgG in phosphate buffered saline , pH 7.4, 150mM NaCl, 0.02% sodium azide and 50% glycerol.

## Product Images

---



IHC image of RACO0124 diluted at 1:100 and staining in paraffin-embedded human melanoma cancer performed on a Leica Bond™ system. After dewaxing and hydration, antigen retrieval was mediated by high pressure in a citrate buffer (pH 6.0). Section was blocked with 10% normal goat serum 30min at RT. Then primary antibody (1% BSA) was incubated at 4°C overnight. The primary is detected by a biotinylated secondary antibody and visualized using an HRP conjugated SP system.