

HDAC6 Recombinant Antibody



RACO0137

Product Information

Size:

50ul

Reactivity:

Human

Source:

Human

Isotype:

Rabbit IgG

Applications:

ELISA, WB, IHC, IP

Recommended dilutions:

WB:1:500-1:5000, IHC:1:50-1:200, IP:1:200-1:1000

Protein Background:

Responsible for the deacetylation of lysine residues on the N-terminal part of the core histones (H2A, H2B, H3 and H4). Histone deacetylation gives a tag for epigenetic repression and plays an important role in transcriptional regulation, cell cycle progression and developmental events. Histone deacetylases act via the formation of large multiprotein complexes (By similarity). Plays a central role in microtubule-dependent cell motility via deacetylation of tubulin. Involved in the MTA1-mediated epigenetic regulation of ESR1 expression in breast cancer.

Gene ID:

HDAC6

Uniprot

Q9UBN7

Synonyms:

Histone deacetylase 6, HD6, HDAC6, KIAA0901, JM21

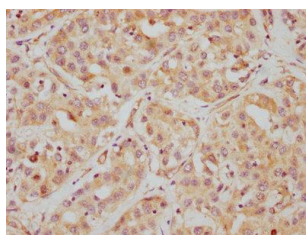
Immunogen:

A synthesized peptide derived from human HDAC6.

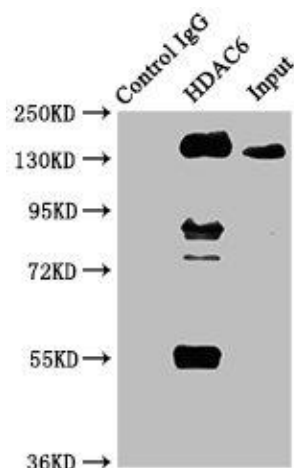
Storage:

Rabbit IgG in phosphate buffered saline , pH 7.4, 150mM NaCl, 0.02% sodium azide and 50% glycerol.

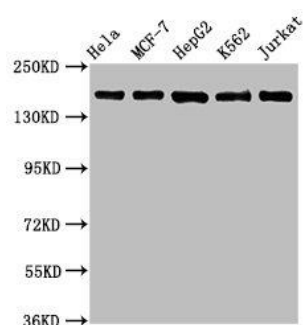
Product Images



IHC image of RACO0137 diluted at 1:112.5 and staining in paraffin-embedded human liver cancer performed on a Leica Bond™ system. After dewaxing and hydration, antigen retrieval was mediated by high pressure in a citrate buffer (pH 6.0). Section was blocked with 10% normal goat serum 30min at RT. Then primary antibody (1% BSA) was incubated at 4°C overnight. The primary is detected by a biotinylated secondary antibody and visualized using an HRP conjugated SP system.



Immunoprecipitating HDAC6 in HepG2 whole cell lysate) Lane 1: Rabbit control IgG instead of RACO0137 in HepG2 whole cell lysate)
For western blotting, a HRP-conjugated Protein G antibody was used as the secondary antibody (1/2000)
Lane 2: RACO0137 (3µg) + HepG2 whole cell lysate) (500µg)
Lane 3: HepG2 whole cell lysate) (20µg)



Western Blot
Positive WB detected in(HeLa whole cell lysate) MCF-7 whole cell lysate)
HepG2 whole cell lysate) K562 whole cell lysate) Jurkat whole cell lysate) All lanes: HDAC6 antibody at 1(1µg/ml)
Secondary
Goat polyclonal to rabbit IgG at 1:50000 dilution
Predicted band size: 132, 115 KDa
Observed band size: 160 KDa