

RACO0142

---

## Product Information

**Size:**

50ul

**Reactivity:**

Human

**Source:**

Human

**Isotype:**

Rabbit IgG

**Applications:**

ELISA, IHC

**Recommended dilutions:**

IHC:1:50-1:200

**Protein Background:**

May play a role not only in inflammatory and immunological responses but also in normal lymphocyte recirculation and homing. May play an important role in trafficking of T-cells in thymus, and T-cell and B-cell migration to secondary lymphoid organs. Binds to chemokine receptor CCR7. Recombinant CCL19 shows potent chemotactic activity for T-cells and B-cells but not for granulocytes and monocytes. Binds to atypical chemokine receptor ACKR4 and mediates the recruitment of beta-arrestin (ARRB1/2) to ACKR4.

**Gene ID:**

CCL19

**Uniprot**

Q99731

**Synonyms:**

C-C motif chemokine 19, Beta-chemokine exodus-3, CK beta-11, Epstein-Barr virus-induced molecule 1 ligand chemokine, EB11 ligand chemokine, ELC, Macrophage inflammatory protein 3 beta, MIP-3-beta, Small-inducible cytokine A19, CCL19, ELC, MIP3B, SCYA19

**Immunogen:**

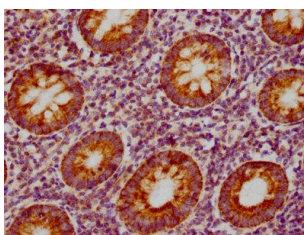
A synthesized peptide derived from human CCL19.

**Storage:**

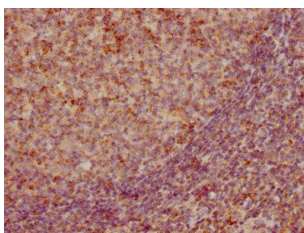
Rabbit IgG in phosphate buffered saline , pH 7.4, 150mM NaCl, 0.02% sodium azide and 50% glycerol.

## Product Images

---



IHC image of RACO0142 diluted at 1:155 and staining in paraffin-embedded human appendix tissue performed on a Leica Bond™ system. After dewaxing and hydration, antigen retrieval was mediated by high pressure in a citrate buffer (pH 6.0). Section was blocked with 10% normal goat serum 30min at RT. Then primary antibody (1% BSA) was incubated at 4°C overnight. The primary is detected by a biotinylated secondary antibody and visualized using an HRP conjugated SP system.



IHC image of RACO0142 diluted at 1:155 and staining in paraffin-embedded human tonsil tissue performed on a Leica Bond™ system. After dewaxing and hydration, antigen retrieval was mediated by high pressure in a citrate buffer (pH 6.0). Section was blocked with 10% normal goat serum 30min at RT. Then primary antibody (1% BSA) was incubated at 4°C overnight. The primary is detected by a biotinylated secondary antibody and visualized using an HRP conjugated SP system.