

RACO0145

Product Information

Size:

50ul

Reactivity:

Human

Source:

Human

Isotype:

Rabbit IgG

Applications:

ELISA, WB

Recommended dilutions:

WB:1:500-1:5000

Protein Background:

Component of the microprocessor complex that acts as a RNA- and heme-binding protein that is involved in the initial step of microRNA (miRNA) biogenesis. Component of the microprocessor complex that is required to process primary miRNA transcripts (pri-miRNAs) to release precursor miRNA (pre-miRNA) in the nucleus. Within the microprocessor complex, DGCR8 function as a molecular anchor necessary for the recognition of pri-miRNA at dsRNA-ssRNA junction and directs DROSHA to cleave 11 bp away from the junction to release hairpin-shaped pre-miRNAs that are subsequently cut by the cytoplasmic DICER to generate mature miRNAs.

Gene ID:

DGCR8

Uniprot

Q8WYQ5

Synonyms:

Microprocessor complex subunit DGCR8, DiGeorge syndrome critical region 8, DGCR8, C22orf12, DGCRK6, LP4941

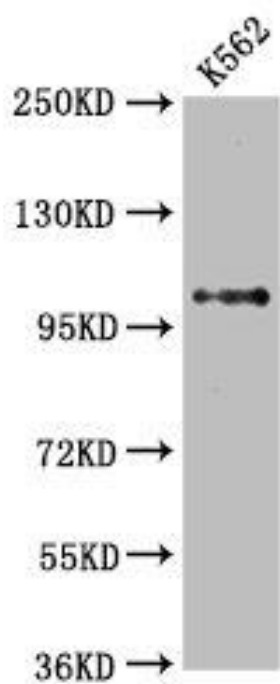
Immunogen:

A synthesized peptide derived from human DGCR8.

Storage:

Rabbit IgG in phosphate buffered saline , pH 7.4, 150mM NaCl, 0.02% sodium azide and 50% glycerol.

Product Images



Western Blot

Positive WB detected in(K562 whole cell lysate) All lanes: DGCR8 antibody at 2.65 μ g/ml

Secondary

Goat polyclonal to rabbit IgG at 1:50000 dilution

Predicted band size: 87, 33, 83 KDa

Observed band size: 100 KDa