

GOLM1 Recombinant Antibody



RACO0146

Product Information

Size:

50ul

Reactivity:

Human

Source:

Human

Isotype:

Rabbit IgG

Applications:

ELISA, WB, FC

Recommended dilutions:

WB:1:500-1:5000

Protein Background:

Unknown. Cellular response protein to viral infection.

Gene ID:

GOLM1

Uniprot

Q8NBJ4

Synonyms:

Golgi membrane protein 1, Golgi membrane protein GP73, Golgi phosphoprotein 2, GOLM1, C9orf155, GOLPH2, PSEC0242, UNQ686/PRO1326

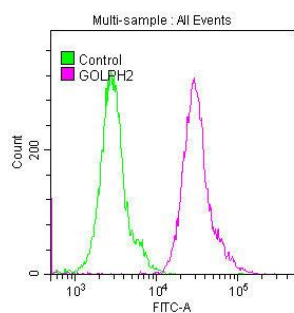
Immunogen:

A synthesized peptide derived from human GOLM1.

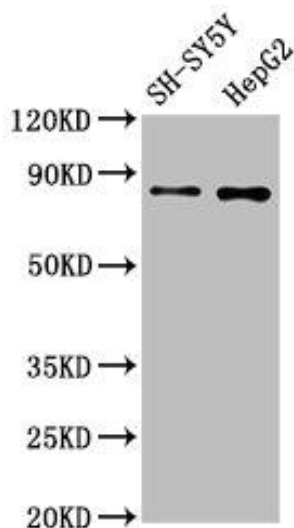
Storage:

Rabbit IgG in phosphate buffered saline , pH 7.4, 150mM NaCl, 0.02% sodium azide and 50% glycerol.

Product Images



Overlay histogram showing Hela cells stained with RACO0146 (red line) at for 4h). The cells were fixed with 70% Ethylalcohol (18h) and then permeabilized with 0.3% Triton X-100 for 2 min. The cells were then incubated in 1x PBS /10% normal goat serum to block non-specific protein-protein interactions followed by primary antibody for 1 h at 4°C. The secondary antibody used was FITC goat anti-rabbit IgG (H+L) at 1/200 dilution for 1 h at 4°C. Control antibody (green line) was used under the same conditions. Acquisition of >10,000 events was performed.



Western Blot

Positive WB detected in(SH-SY5Y whole cell lysate) HepG2 whole cell lysate) All lanes: GOLM1 antibody at 1(3µg/ml)

Secondary

Goat polyclonal to rabbit IgG at 1:50000 dilution

Predicted band size: 46, 45 KDa

Observed band size: 80 KDa