

RACO0154

Product Information

Size:

50ul

Reactivity:

Human

Source:

Human

Isotype:

Rabbit IgG

Applications:

ELISA, WB, IHC

Recommended dilutions:

WB:1:500-1:5000, IHC:1:50-1:200

Protein Background:

Liver-produced hormone that constitutes the main circulating regulator of iron absorption and distribution across tissues. Acts by promoting endocytosis and degradation of ferroportin, leading to the retention of iron in iron-exporting cells and decreased flow of iron into plasma. Controls the major flows of iron into plasma: absorption of dietary iron in the intestine, recycling of iron by macrophages, which phagocytose old erythrocytes and other cells, and mobilization of stored iron from hepatocytes .

Gene ID:

HAMP

Uniprot

P81172

Synonyms:

Hepcidin, Liver-expressed antimicrobial peptide 1, LEAP-1, Putative liver tumor regressor, PLTR, Hepcidin-25, Hepc25, Hepcidin-20, Hepc20, HAMP, HEPC, LEAP1, UNQ487/PRO1003

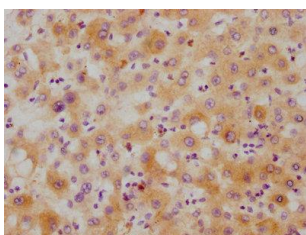
Immunogen:

A synthesized peptide derived from human HAMP.

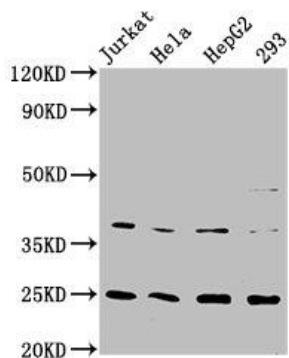
Storage:

Rabbit IgG in phosphate buffered saline , pH 7.4, 150mM NaCl, 0.02% sodium azide and 50% glycerol.

Product Images



IHC image of RACO0154 diluted at 1:215 and staining in paraffin-embedded human liver tissue performed on a Leica Bond™ system. After dewaxing and hydration, antigen retrieval was mediated by high pressure in a citrate buffer (pH 6.0). Section was blocked with 10% normal goat serum 30min at RT. Then primary antibody (1% BSA) was incubated at 4°C overnight. The primary is detected by a biotinylated secondary antibody and visualized using an HRP conjugated SP system.



Western Blot

Positive WB detected in(Jurkat whole cell lysate) HeLa whole cell lysate) HepG2 whole cell lysate) 293 whole cell lysate) All lanes: HAMP antibody at 2.15µg/ml

Secondary

Goat polyclonal to rabbit IgG at 1:50000 dilution

Predicted band size: 10 KDa

Observed band size: 25 KDa