

RACO0158

Product Information

Size:

50ul

Reactivity:

Human

Source:

Human

Isotype:

Rabbit IgG

Applications:

ELISA, WB, IF, FC

Recommended dilutions:

WB:1:500-1:5000, IF:1:20-1:200

Protein Background:

Involved in the activation cascade of caspases responsible for apoptosis execution. Binding of caspase-9 to Apaf-1 leads to activation of the protease which then cleaves and activates caspase-3. Promotes DNA damage-induced apoptosis in a ABL1/c-Abl-dependent manner. Proteolytically cleaves poly(ADP-ribose) polymerase (PARP).

Gene ID:

CASP9

Uniprot

P55211

Synonyms:

Caspase-9, Apoptotic protease Mch-6, Apoptotic protease-activating factor 3, APAF-3, ICE-like apoptotic protease 6, ICE-LAP6, Caspase-9 subunit p35, Caspase-9 subunit p10, CASP9, MCH6

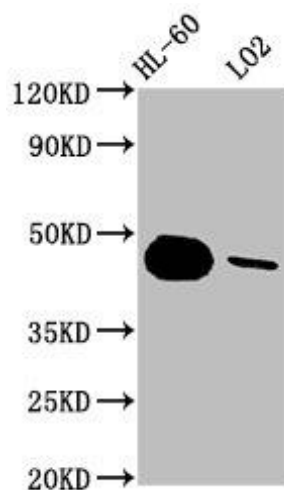
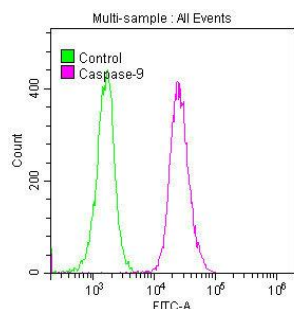
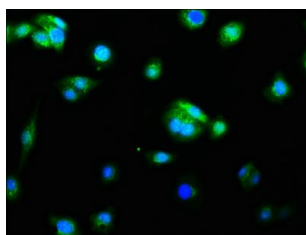
Immunogen:

A synthesized peptide derived from human CASP9.

Storage:

Rabbit IgG in phosphate buffered saline , pH 7.4, 150mM NaCl, 0.02% sodium azide and 50% glycerol.

Product Images



Immunofluorescence staining of HepG2 cells with RACO0158 at 1:60, counter-stained with DAPI. The cells were fixed in 4% formaldehyde, permeabilized using 0.2% Triton X-100 and blocked in 10% normal Goat Serum. The cells were then incubated with the antibody overnight at 4°C. The secondary antibody was Alexa Fluor 488-conjugated AffiniPure Goat Anti-Rabbit IgG (H+L).

Overlay histogram showing K562 cells stained with RACO0158 (red line) at for 4h). The cells were fixed with 70% Ethylalcohol (18h) and then permeabilized with 0.3% Triton X-100 for 2 min. The cells were then incubated in 1x PBS /10% normal goat serum to block non-specific protein-protein interactions followed by primary antibody for 1 h at 4°C. The secondary antibody used was FITC goat anti-rabbit IgG (H+L) at 1/200 dilution for 1 h at 4°C. Control antibody (green line) was used under the same conditions. Acquisition of >10,000 events was performed.

Western Blot

Positive WB detected in(HL-60 whole cell lysate) LO2 whole cell lysate)

All lanes: CASP9 antibody at 1.8µg/ml

Secondary

Goat polyclonal to rabbit IgG at 1:50000 dilution

Predicted band size: 47, 31, 18, 37 KDa

Observed band size: 47 KDa