

# CDKN1B Recombinant Antibody



RACO0163

---

## Product Information

**Size:**

50ul

**Reactivity:**

Human, Mouse

**Source:**

Human

**Isotype:**

Rabbit IgG

**Applications:**

ELISA, WB, IHC, IF

**Recommended dilutions:**

WB:1:500-1:5000, IHC:1:50-1:200, IF:1:20-1:200

**Protein Background:**

Important regulator of cell cycle progression. Inhibits the kinase activity of CDK2 bound to cyclin A, but has little inhibitory activity on CDK2 bound to SPDYA . Involved in G1 arrest. Potent inhibitor of cyclin E- and cyclin A-CDK2 complexes. Forms a complex with cyclin type D-CDK4 complexes and is involved in the assembly, stability, and modulation of CCND1-CDK4 complex activation. Acts either as an inhibitor or an activator of cyclin type D-CDK4 complexes depending on its phosphorylation state and/or stoichiometry.

**Gene ID:**

CDKN1B

**Uniprot**

P46527

**Synonyms:**

Cyclin-dependent kinase inhibitor 1B, Cyclin-dependent kinase inhibitor p27, CDKN1B, KIP1

**Immunogen:**

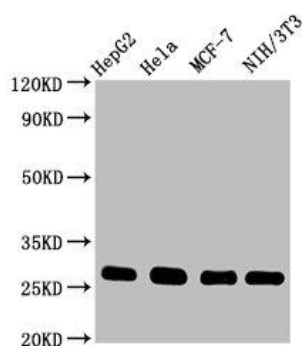
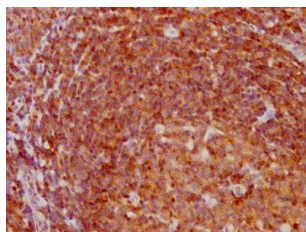
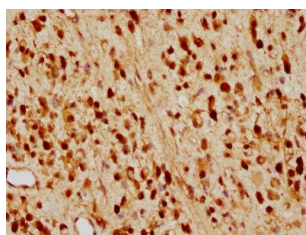
A synthesized peptide derived from human CDKN1B.

**Storage:**

Rabbit IgG in phosphate buffered saline , pH 7.4, 150mM NaCl, 0.02% sodium azide and 50% glycerol.

## Product Images

---



IHC image of RACO0163 diluted at 1:97.5 and staining in paraffin-embedded human glioma cancer performed on a Leica Bond™ system. After dewaxing and hydration, antigen retrieval was mediated by high pressure in a citrate buffer (pH 6.0). Section was blocked with 10% normal goat serum 30min at RT. Then primary antibody (1% BSA) was incubated at 4°C overnight. The primary is detected by a biotinylated secondary antibody and visualized using an HRP conjugated SP system.

IHC image of RACO0163 diluted at 1:97.5 and staining in paraffin-embedded human tonsil tissue performed on a Leica Bond™ system. After dewaxing and hydration, antigen retrieval was mediated by high pressure in a citrate buffer (pH 6.0). Section was blocked with 10% normal goat serum 30min at RT. Then primary antibody (1% BSA) was incubated at 4°C overnight. The primary is detected by a biotinylated secondary antibody and visualized using an HRP conjugated SP system.

### Western Blot

Positive WB detected in( HepG2 whole cell lysate) HeLa whole cell lysate) MCF-7 whole cell lysate) NIH/3T3 whole cell lysate) All lanes: CDKN1B antibody at 0.9µg/ml

### Secondary

Goat polyclonal to rabbit IgG at 1:50000 dilution

Predicted band size: 23 KDa

Observed band size: 27 KDa