

RACO0166

Product Information

Size:

50ul

Reactivity:

Human

Source:

Human

Isotype:

Rabbit IgG

Applications:

ELISA, WB, IHC, FC, IP

Recommended dilutions:

WB:1:500-1:5000, IHC:1:50-1:200, IP:1:200-1:1000

Protein Background:

Neurotrophic factor that enhances survival and morphological differentiation of dopaminergic neurons and increases their high-affinity dopamine uptake.

Gene ID:

GDNF

Uniprot

P39905

Synonyms:

Glial cell line-derived neurotrophic factor, hGDNF, Astrocyte-derived trophic factor, ATF, GDNF

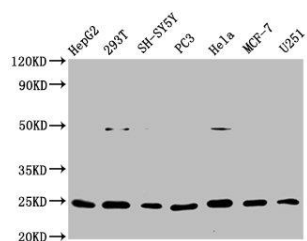
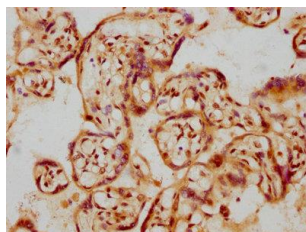
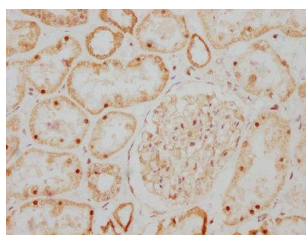
Immunogen:

A synthesized peptide derived from human GDNF.

Storage:

Rabbit IgG in phosphate buffered saline , pH 7.4, 150mM NaCl, 0.02% sodium azide and 50% glycerol.

Product Images



IHC image of RACO0166 diluted at 1:107.5 and staining in paraffin-embedded human kidney tissue performed on a Leica Bond™ system. After dewaxing and hydration, antigen retrieval was mediated by high pressure in a citrate buffer (pH 6.0). Section was blocked with 10% normal goat serum 30min at RT. Then primary antibody (1% BSA) was incubated at 4°C overnight. The primary is detected by a biotinylated secondary antibody and visualized using an HRP conjugated SP system.

IHC image of RACO0166 diluted at 1:107.5 and staining in paraffin-embedded human placenta tissue performed on a Leica Bond™ system. After dewaxing and hydration, antigen retrieval was mediated by high pressure in a citrate buffer (pH 6.0). Section was blocked with 10% normal goat serum 30min at RT. Then primary antibody (1% BSA) was incubated at 4°C overnight. The primary is detected by a biotinylated secondary antibody and visualized using an HRP conjugated SP system.

Western Blot

Positive WB detected in(HepG2 whole cell lysate) 293T whole cell lysate) SH-SY5Y whole cell lysate) PC3 whole cell lysate) HeLa whole cell lysate) MCF-7 whole cell lysate) U251 whole cell lysate) All lanes: GDNF antibody at(1µg/ml)

Secondary

Goat polyclonal to rabbit IgG at 1:50000 dilution

Predicted band size: 24, 21, 26, 23, 19 KDa

Observed band size: 24 KDa