

STIP1 Recombinant Antibody



RACO0169

Product Information

Size:

50ul

Reactivity:

Human

Source:

Human

Isotype:

Rabbit IgG

Applications:

ELISA, WB

Recommended dilutions:

WB:1:500-1:5000

Protein Background:

Acts as a co-chaperone for HSP90AA1 . Mediates the association of the molecular chaperones HSPA8/HSC70 and HSP90 (By similarity).

Gene ID:

STIP1

Uniprot

P31948

Synonyms:

Stress-induced-phosphoprotein 1, STI1, Hsc70/Hsp90-organizing protein, Hop, Renal carcinoma antigen NY-REN-11, Transformation-sensitive protein IEF SSP 3521, STIP1

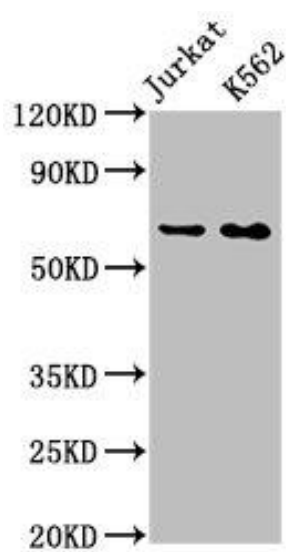
Immunogen:

A synthesized peptide derived from human STIP1.

Storage:

Rabbit IgG in phosphate buffered saline , pH 7.4, 150mM NaCl, 0.02% sodium azide and 50% glycerol.

Product Images



Western Blot

Positive WB detected in(Jurkat whole cell lysate) K562 whole cell lysate)

All lanes: STIP1 antibody at 0.9 μ g/ml

Secondary

Goat polyclonal to rabbit IgG at 1:50000 dilution

Predicted band size: 63, 69, 60 KDa

Observed band size: 63 KDa