

# CYP19A1 Recombinant Antibody



RACO0186

---

## Product Information

**Size:**

50ul

**Reactivity:**

Human

**Source:**

Human

**Isotype:**

Rabbit IgG

**Applications:**

ELISA, WB, IHC, IF

**Recommended dilutions:**

WB:1:500-1:5000, IHC:1:50-1:200, IF:1:20-1:200

**Protein Background:**

Catalyzes the formation of aromatic C18 estrogens from C19 androgens.

**Gene ID:**

CYP19A1

**Uniprot**

P11511

**Synonyms:**

Aromatase, CYPXIX, Cytochrome P-450AROM, Cytochrome P450 19A1, Estrogen synthase, CYP19A1, ARO1, CYAR, CYP19

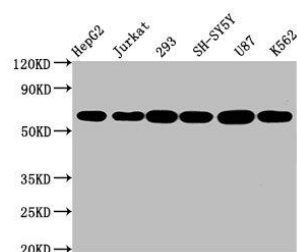
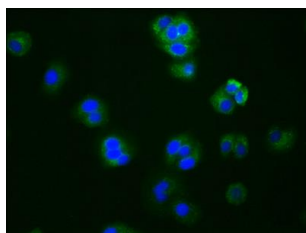
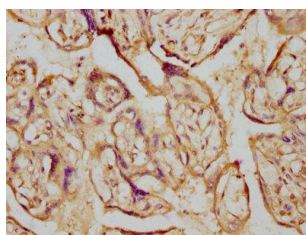
**Immunogen:**

A synthesized peptide derived from human CYP19A1.

**Storage:**

Rabbit IgG in phosphate buffered saline , pH 7.4, 150mM NaCl, 0.02% sodium azide and 50% glycerol.

## Product Images



IHC image of RACO0186 diluted at 1:230 and staining in paraffin-embedded human placenta tissue performed on a Leica Bond™ system. After dewaxing and hydration, antigen retrieval was mediated by high pressure in a citrate buffer (pH 6.0). Section was blocked with 10% normal goat serum 30min at RT. Then primary antibody (1% BSA) was incubated at 4°C overnight. The primary is detected by a biotinylated secondary antibody and visualized using an HRP conjugated SP system.

Immunofluorescence staining of HepG2 cells with RACO0186 at 1:76, counter-stained with DAPI. The cells were fixed in 4% formaldehyde, permeabilized using 0.2% Triton X-100 and blocked in 10% normal Goat Serum. The cells were then incubated with the antibody overnight at 4°C. The secondary antibody was Alexa Fluor 488-conjugated AffiniPure Goat Anti-Rabbit IgG (H+L).

### Western Blot

Positive WB detected in( HepG2 whole cell lysate) Jurkat whole cell lysate) 293 whole cell lysate) SH-SY5Y whole cell lysate) U87 whole cell lysate) K562 whole cell lysate) All lanes: CYP19A1 antibody at 2(3µg/ml Secondary

Goat polyclonal to rabbit IgG at 1:50000 dilution

Predicted band size: 58, 25 KDa

Observed band size: 58 KDa